

Sacramento County

Community
Partners Meeting
January 10, 2013




casey family programs

fostering families. fostering change®

Why focus on data?

Provides us the ability to:

- **Compare** metrics with agency mission and practice model
 - **Connect** to evidence-based practice and link processes to desired outcomes
 - **Target** and **Strategize** for improvements
 - **Focus** on end outcomes
 - **Identify** what needs attention
 - **Tell** the story
- 

Basic Terminology

Process Measures - familiar to staff, relevant at a caseworker level, current

“About 92% of children in care had a visit each and every month”

Outcome Measures - the “big picture” measure of system performance, especially when looked at longitudinally

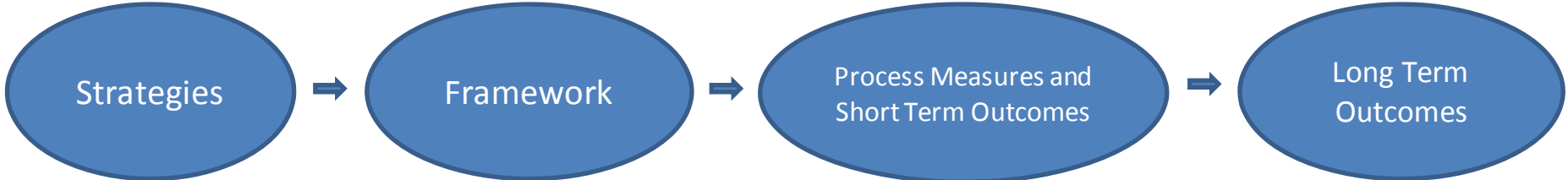
“ About 49% of children entering care for the first time will reunify within 12 months”



Prioritize Measures in line with Agency Values

- To keep children safe and at home
- To improve a child or youth's well-being
- To facilitate a child or youth's move to swift & certain permanency

Sacramento: Dashboard for Accountability



ER-Det

Structured Decision Making

Signs of Safety

Team Decision Making

Regionalization

Centralized Placement Supports Unit

RBS

Vertical Case Management

Concurrent Planning

Families experience continuity of workers

Clearly defined and consistently applied decision-making criteria

Partnership and collaboration with families ; Individualized services

Community based services

Enhanced recruitment, retention and matching of relative and non-relative placements

Improved collaboration among staff

Early and aggressive identification of all permanency options; open and direct communication

Data Integrity and Staff Accountability

Safety
 Timely response to new referrals
 Timely completion of SDM tools

Permanency
 Placement in region
 Placement stability
 Placement with relatives
 Placement in Congregate Care
 Placement with all or some siblings
 Face-to Face Visits (worker/child)

Well-Being
 Tracking of timely medical/dental appointments

Graduation rates

Additional well-being outcomes under discussion; including statewide measures for AB12

Improved Safety

Report rate and proportion referred
 Recurrence of allegations
 Recurrence of allegations after reunification
 Entry rates (placement rates)
 Re-entries into care after reunification

Increased Permanency

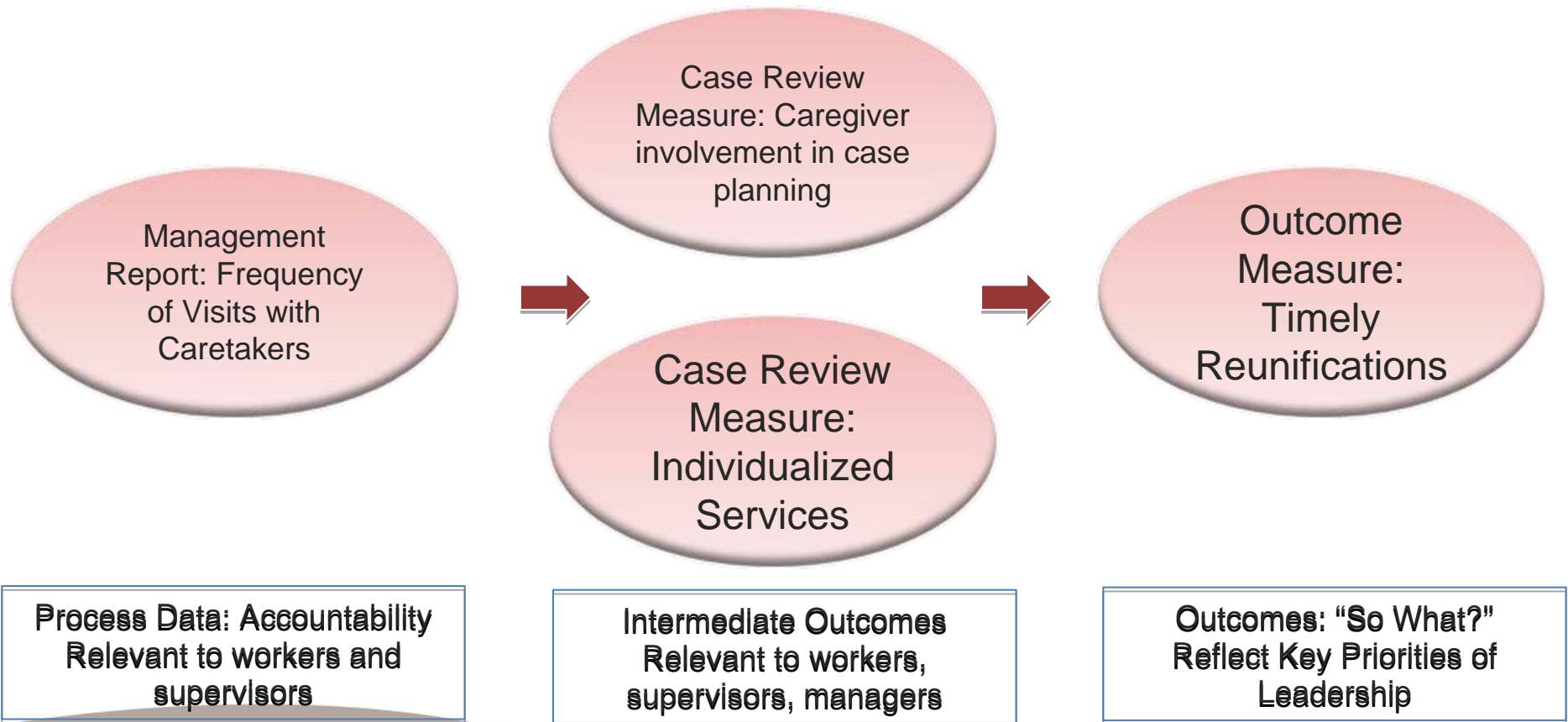
Likelihood and timeliness of permanency (reunification, adoption, guardianship) for new entries (at 6, 12, 24, 36 months or longer)

Permanency for children in care two years or more

Most outcomes are available by age and race/ethnicity



Connecting the Dots



CFSR Findings: Relationship of Well-Being to Permanency

Positive ratings on



Substantial achievement on









- Services to children, parents, foster parents
- Involvement of parents in case planning
- Caseworker visits with children
- Caseworker visits with parents

- Timely achievement of permanency
- Preserving children's connections while in foster care

Factors Associated with Timely Reunification, Guardianship, and Permanent Relative Placement

The strongest associations with timely permanency included:

-  Caseworker Visits with Parents
-  Child's Visits with Parents and Siblings in Foster Care
-  Services to Children, Parents, & Foster Parents
-  Family/Child Involvement in Case Planning
-  ASFA Requirements Regarding Termination of Parental Rights
-  Placement Stability

Strongest Associations Between Visits and Other Indicators

Both Caseworker Visits with Parents and Caseworker Visits with Children were strongly associated with:



Risk of harm to children



Needs & Services for children, parents, foster parents



Child and parent involvement in case planning

Other Significant Associations Between Visits and Indicators

Caseworker Visits with Parents and Caseworker Visits with Children were also strongly associated with:



Services to protect children at home



Safety Outcome 1



Safety Outcome 2



Timely permanency goals



Timely reunification



Child's visits with parents and siblings



Relative placements



Meeting educational needs



Meeting physical health needs



Meeting mental health needs

children

Telling the Story: Key Child Welfare Outcomes

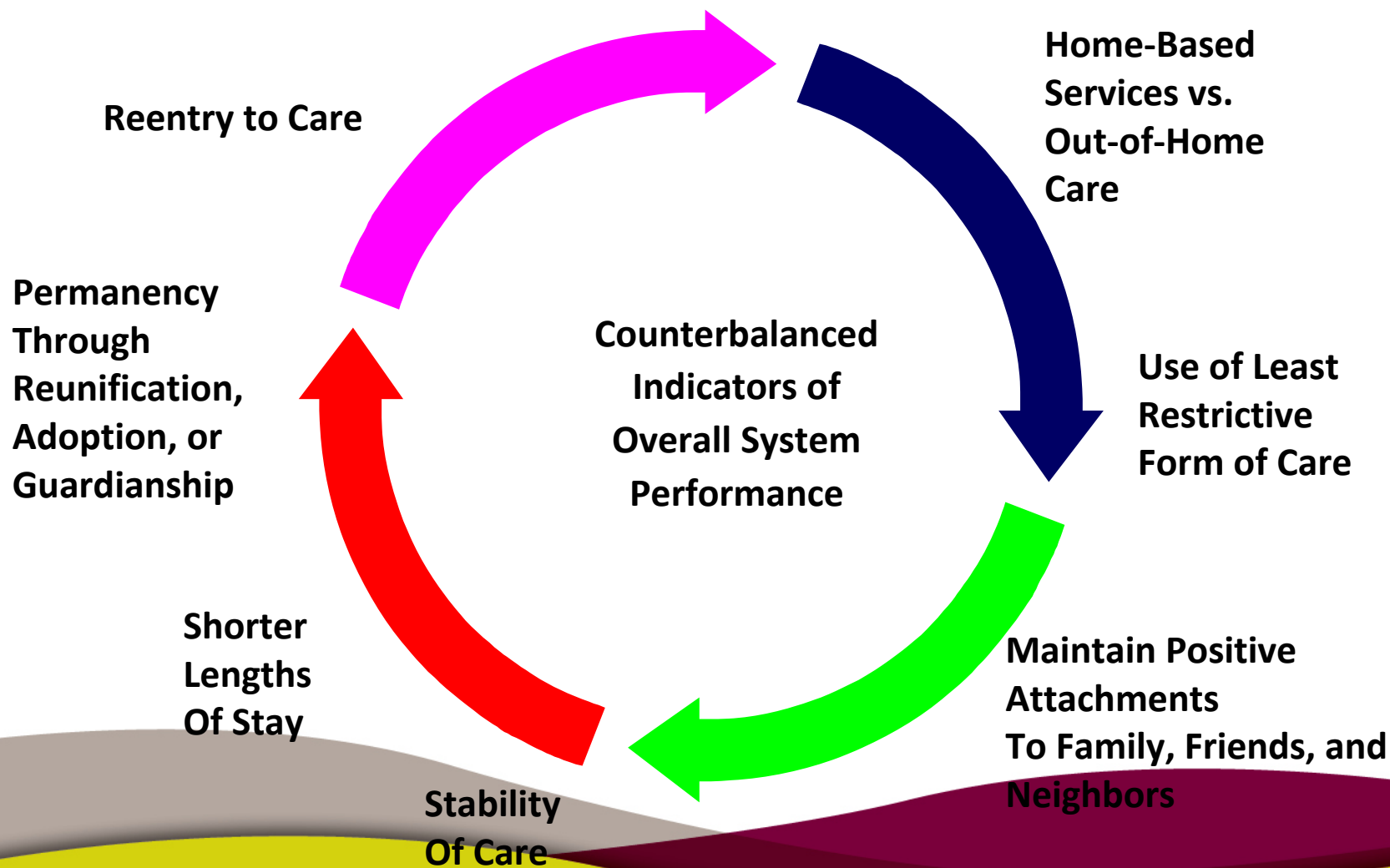


casey family programs

fostering families. fostering change®

Interdependence between measures...

**Community Safety and Prevention of Maltreatment:
Rate of Referrals/ Substantiated Referrals**

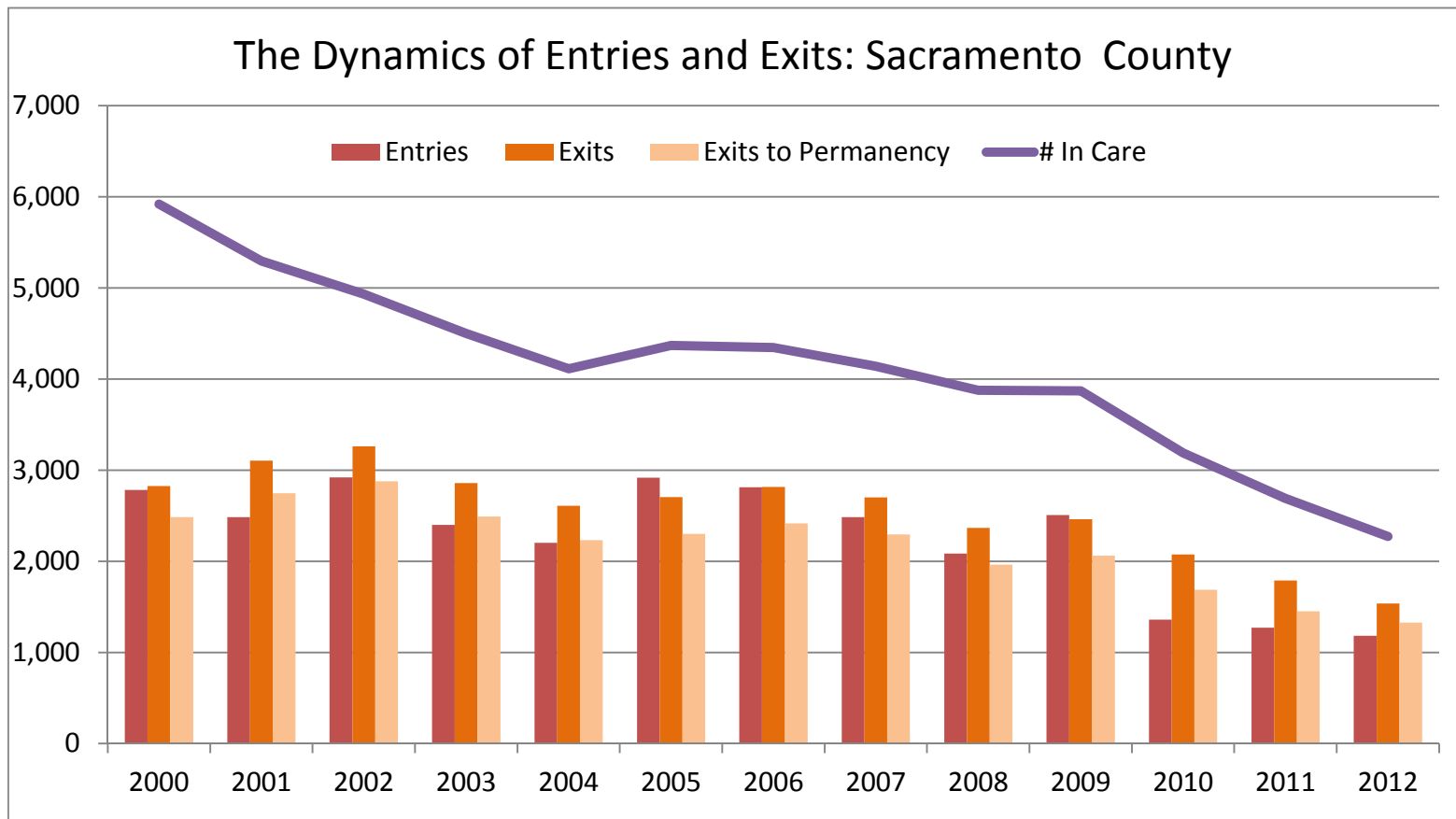


*the current placement system** *(highly simplified)*




*adapted from Lyle, G. L., & Barker, M.A. (1998) Patterns & Spells: New approaches to conceptualizing children's out of home placement experiences. Chicago: American Evaluation Association Annual Conference

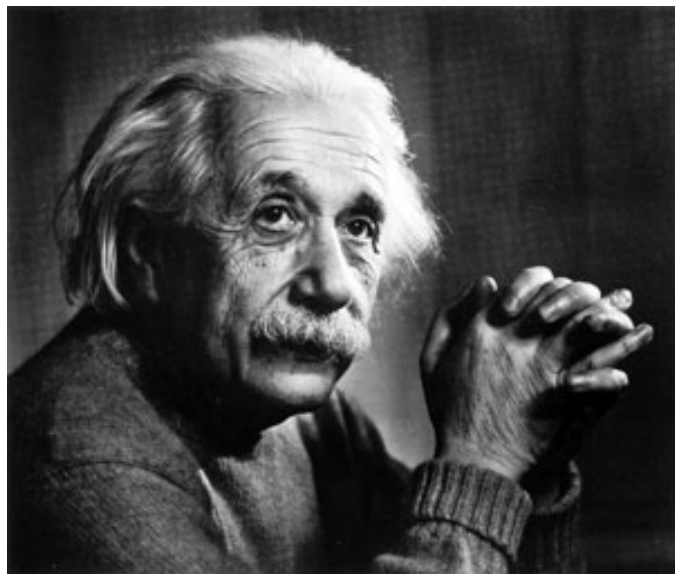
Foster Care Dynamics



So What's the Story?

Describe the issue with as much detail as possible, variation is key to hypothesis development.

- What's happening right now for all kids?
 - Has it always been this way?
 - Is it true in all places, for all ages, for all racial/ethnic groups?
 - Is this indicator correlated with any others?
 - Does it look the same for all types of cases, or in places where practice is different?
- 

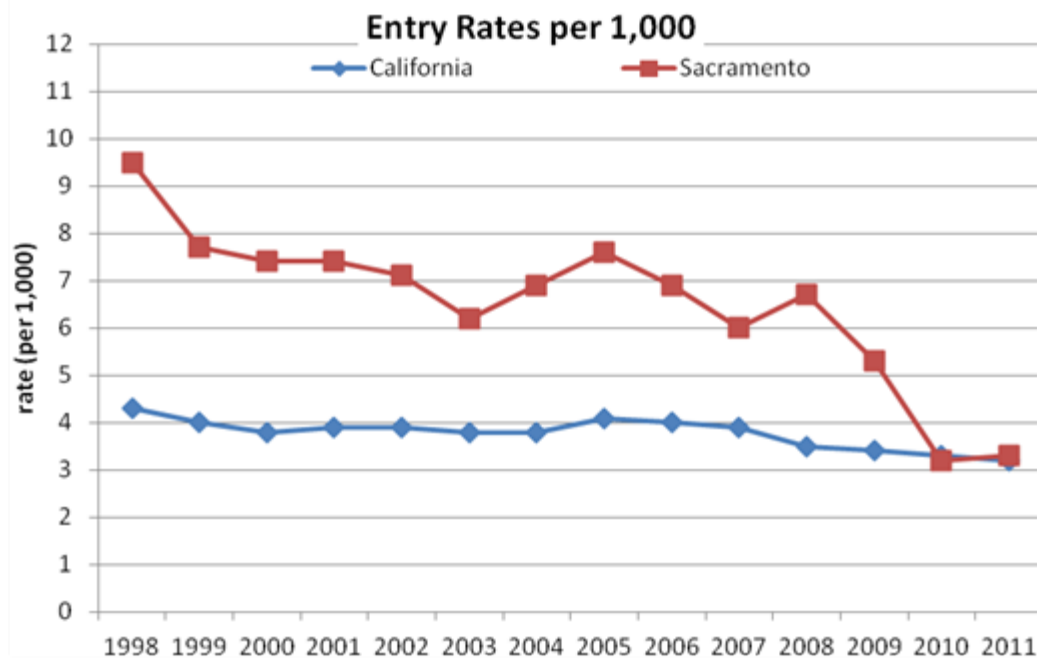


*...if he had one hour
to save the world
he would spend 55
minutes defining the
problem
and only 5 minutes finding
the solution.*

Before jumping right into solving a problem

- Step back
- Invest time and effort
- Improve understanding


Improved Safety: Entry Rates



Entry rates have historically been much higher in Sacramento County than the rest of the state. After a period of consistent decline, entry rates in Sacramento are now similar to the overall state entry rate.

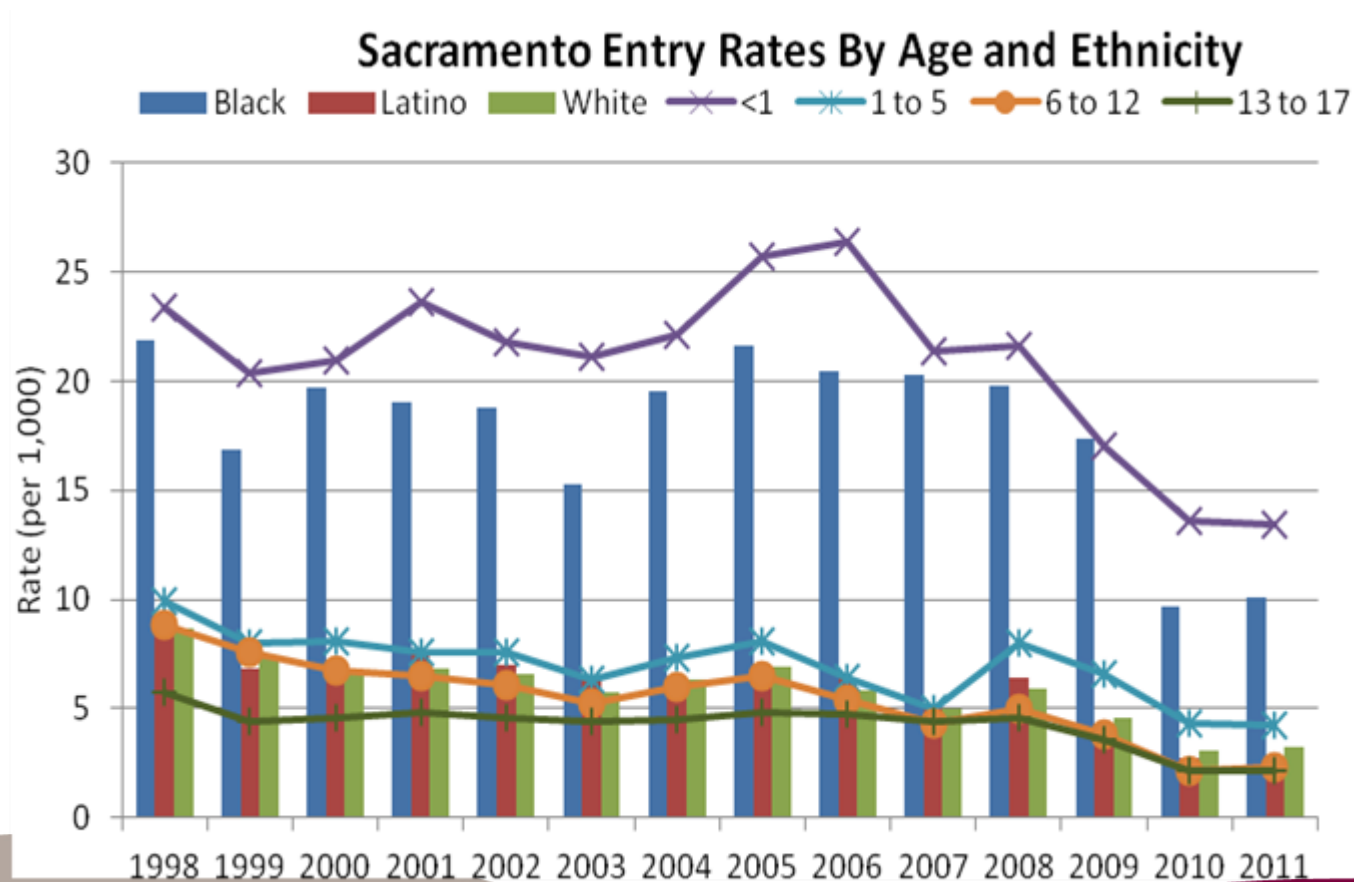
Use Data to Create Urgency for Action – Target improvements based on your own baseline

Regional variation should generate productive discussion about differences in:

- Service array
 - Community differences in reporting and tolerance for “risk”
 - Differences across partner agencies, courts, juvenile justice, behavioral health etc...
 - Demographic risk factors and “case mix”
 - Case loads, turnover (staff and leadership), and training
 - A variety of other policy/practice differences
- 

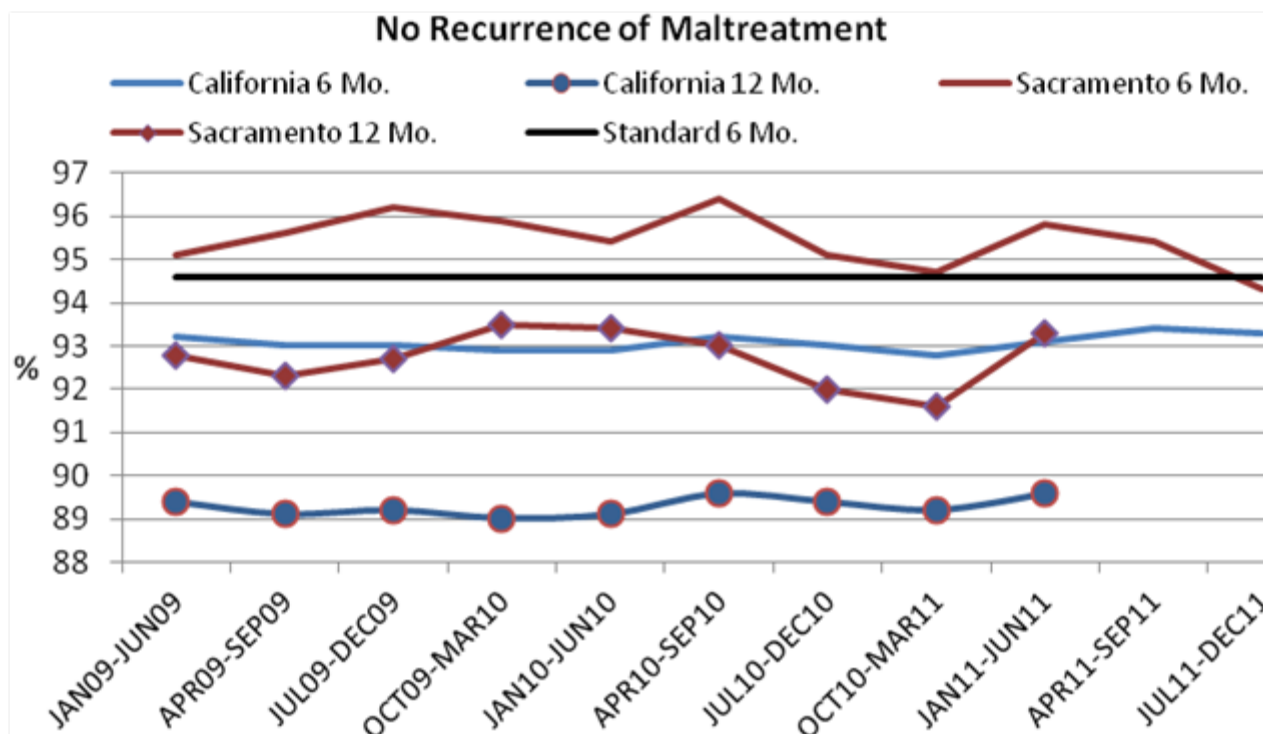
Improved Safety: Entry Rates

While also declining substantially, entry rates remain higher for African Americans and infants (<1) than for other children.




Absence of Repeat Maltreatment:

Sacramento has maintained performance on this measure while reducing entries into care



Practice Discussion: Entries

- What are some of the practice or policy changes that have resulted in this decline in entries?
 - Is the change sustainable?
 - What strategies are in place/planned to maintain, or to continue to reduce entries into care?
- 

children

Managing with Data in Child Welfare

CHILDREN IN CARE PLACEMENT TYPE AND PLACEMENT STABILITY

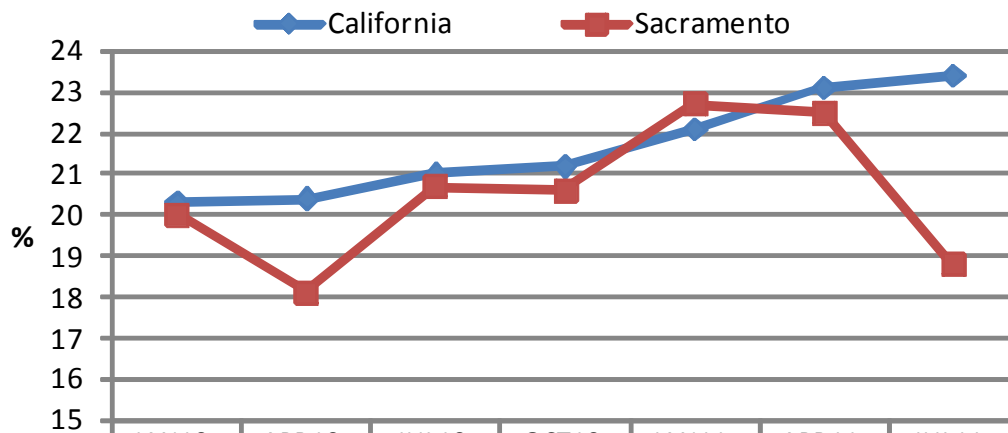


casey family programs

fostering families. fostering change.

Placement Type: Of all first entries, what percent are first placed with kin?

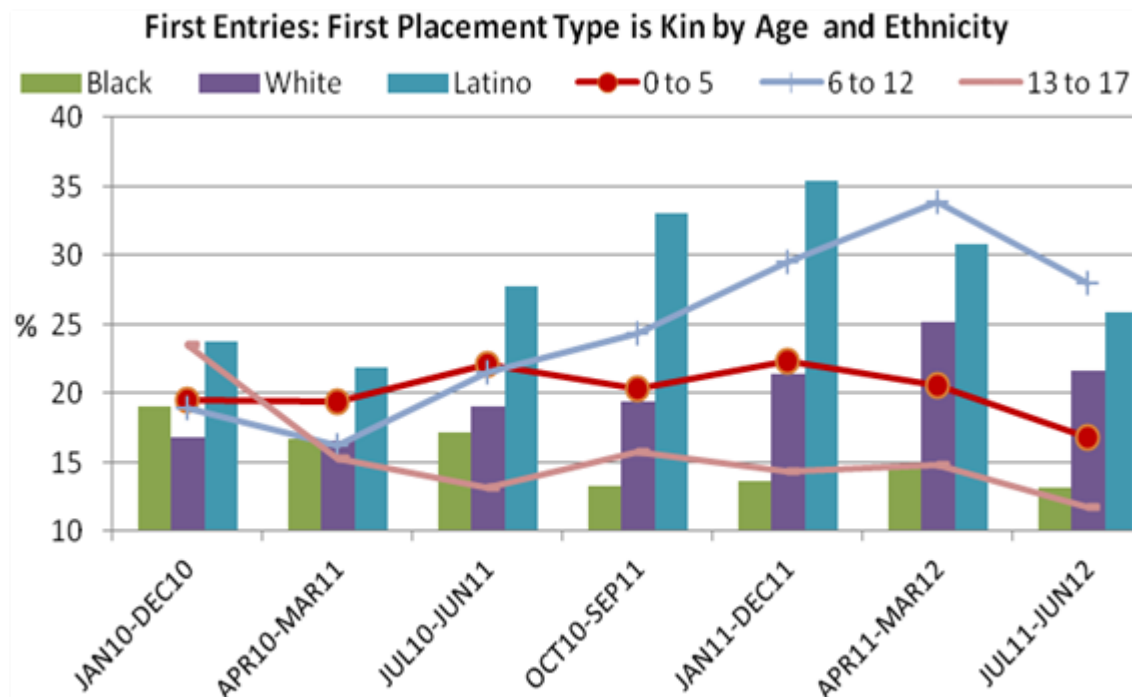
First Entries: First Placement Type Kin



	JAN10- DEC10	APR10- MAR11	JUL10- JUN11	OCT10- SEP11	JAN11- DEC11	APR11- MAR12	JUL11- JUN12
California	20.3	20.4	21.0	21.2	22.1	23.1	23.4
Sacramento	20.0	18.1	20.7	20.6	22.7	22.5	18.8

After improving for the past four reporting periods, performance in Sacramento dipped for children who entered care for the first time between July 2011 and June 2012

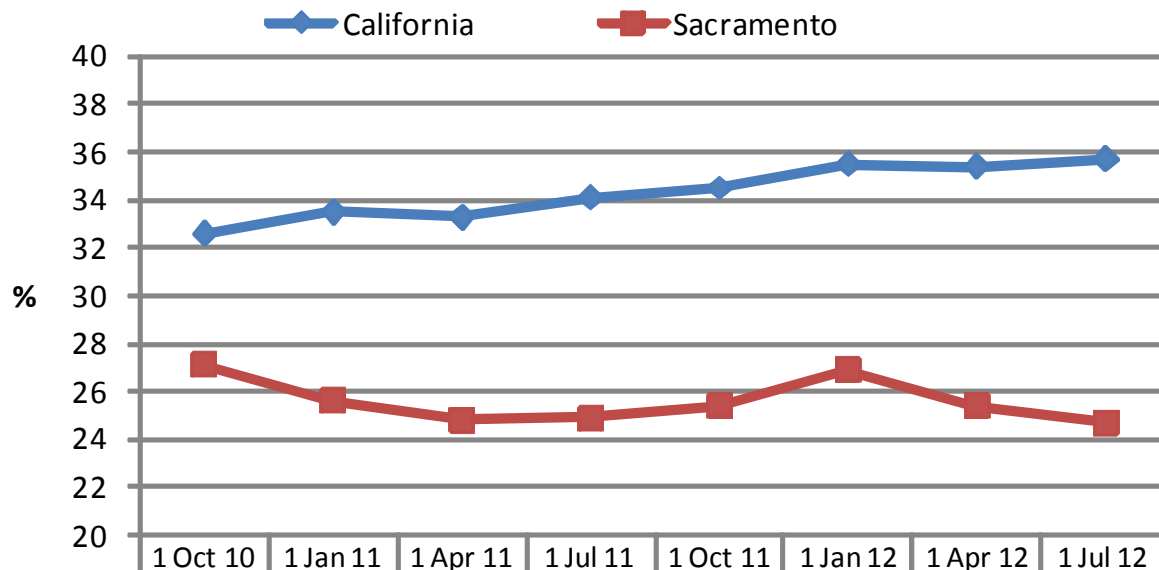
Placement Type: Of all first entries, what percent are first placed with kin?



Kin placements across all ages and ethnicities have declined in the most recent time period. Latino children and those children ages 6 to 12 are most likely to have relative placements at the onset. The percent of African American children coming into care for the first time and placed with relatives has declined.

Another view: What proportion of all children in care are *currently* placed with kin?

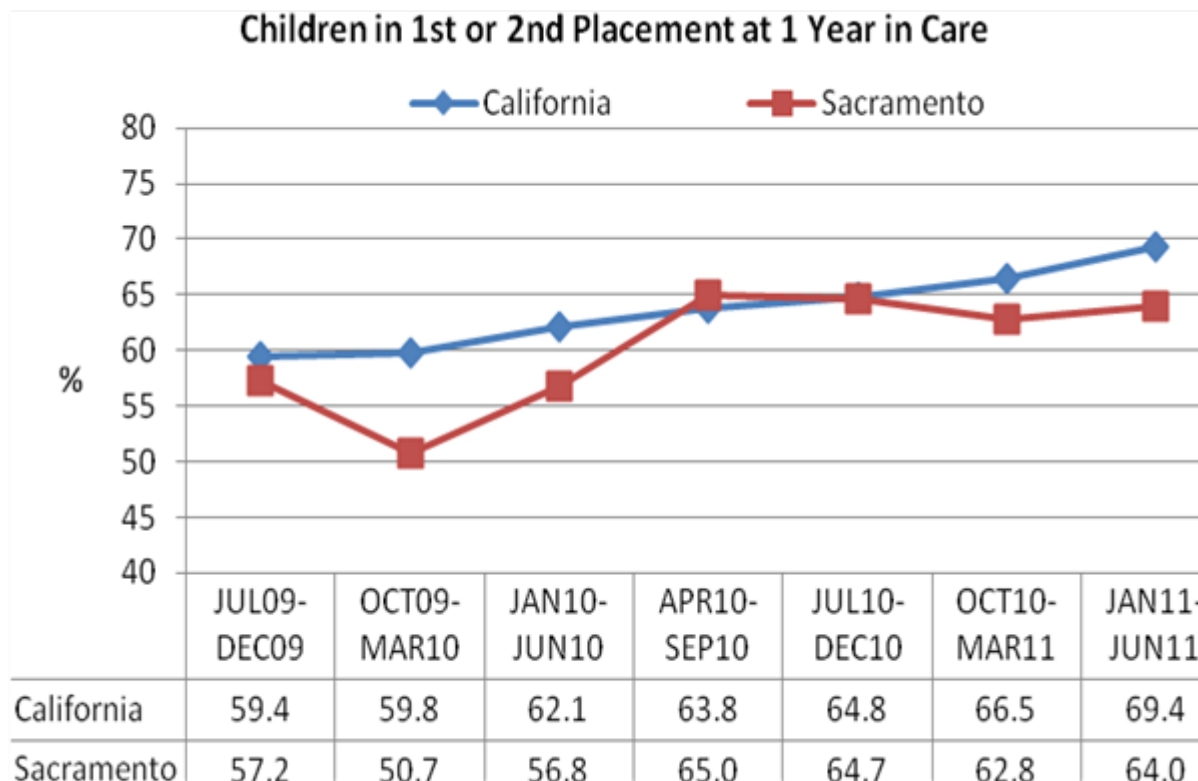
4B Point in Time All Children in Care % Placed with Kin



	1 Oct 10	1 Jan 11	1 Apr 11	1 Jul 11	1 Oct 11	1 Jan 12	1 Apr 12	1 Jul 12
California	32.6	33.5	33.3	34.1	34.5	35.5	35.4	35.7
Sacramento	27.1	25.6	24.8	24.9	25.4	26.9	25.4	24.7

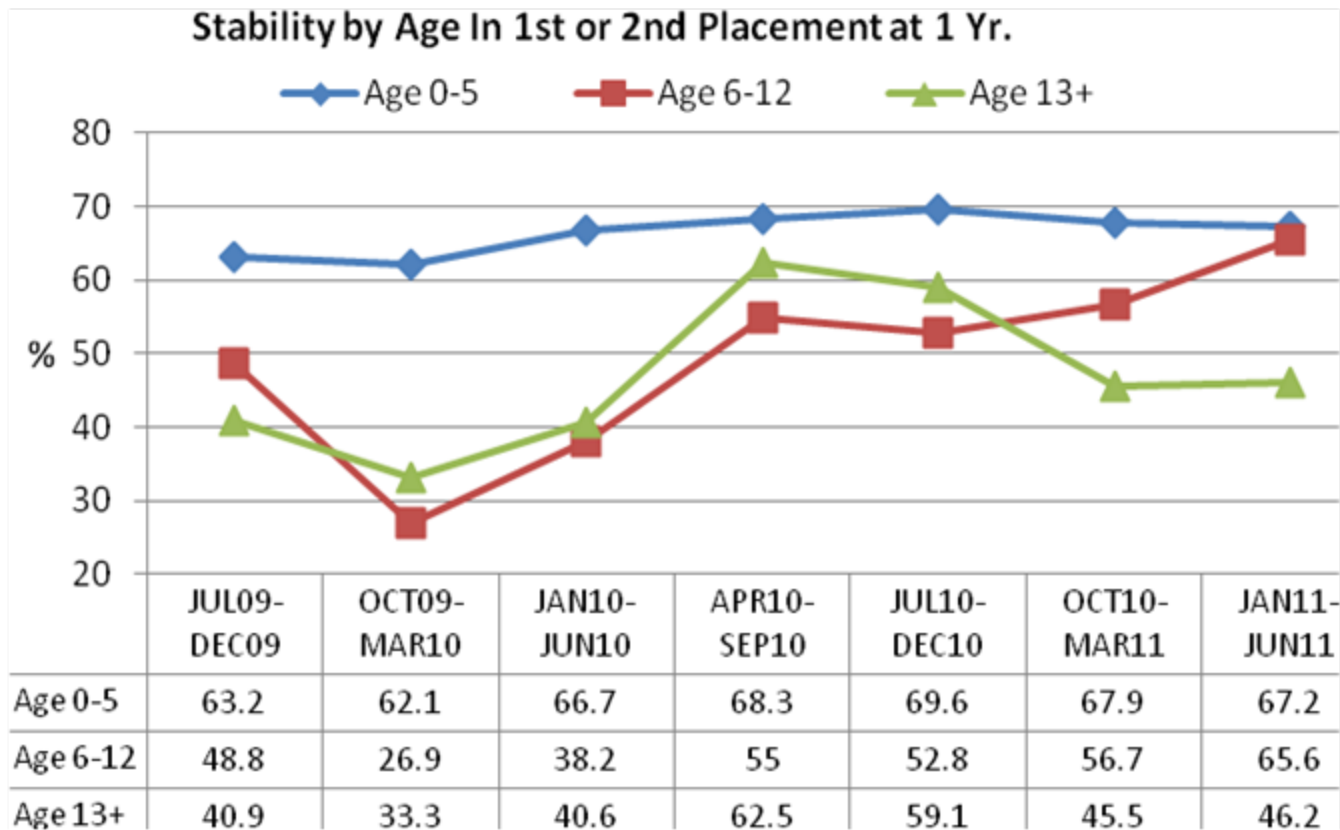
A smaller and declining proportion of all children in care are currently placed with relatives in Sacramento. Relative placement is associated with better placement stability and permanency outcomes.

Placement stability has improved



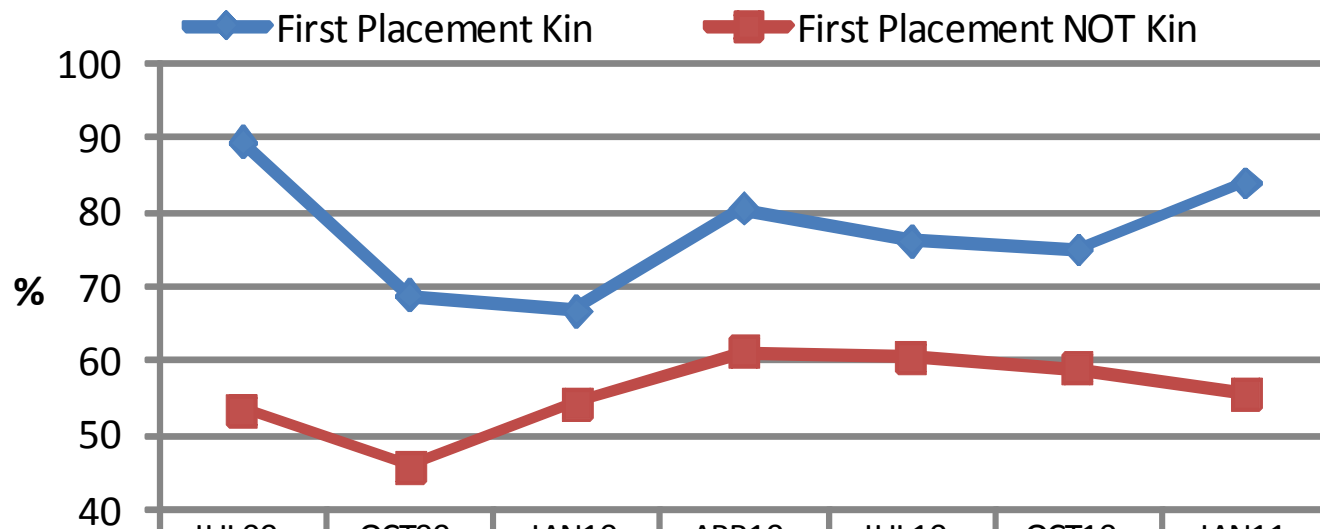
Looks at children entering care for the first time who stay at least one year – what percent have only been in one or two placements?

Placement stability by age




Placement stability by placement type

Stability by First Placement Type In 1st or 2nd Placement at 1 Yr.



	JUL09- DEC09	OCT09- MAR10	JAN10- JUN10	APR10- SEP10	JUL10- DEC10	OCT10- MAR11	JAN11- JUN11
First Placement Kin	89.5	68.8	66.7	80.5	76.1	75.0	83.9
First Placement NOT Kin	53.4	45.7	54.2	61.1	60.6	58.9	55.6

Practice Discussion: Placement Type and Placement Stability

- How does placement type relate to placement stability?
 - What practice/policy changes have had, or will have an impact on these indicators?
 - How can we continue to improve support to kinship homes?
 - What are some of the remaining barriers?
- 

children

Managing with Data in Child Welfare

EXITS FROM CARE

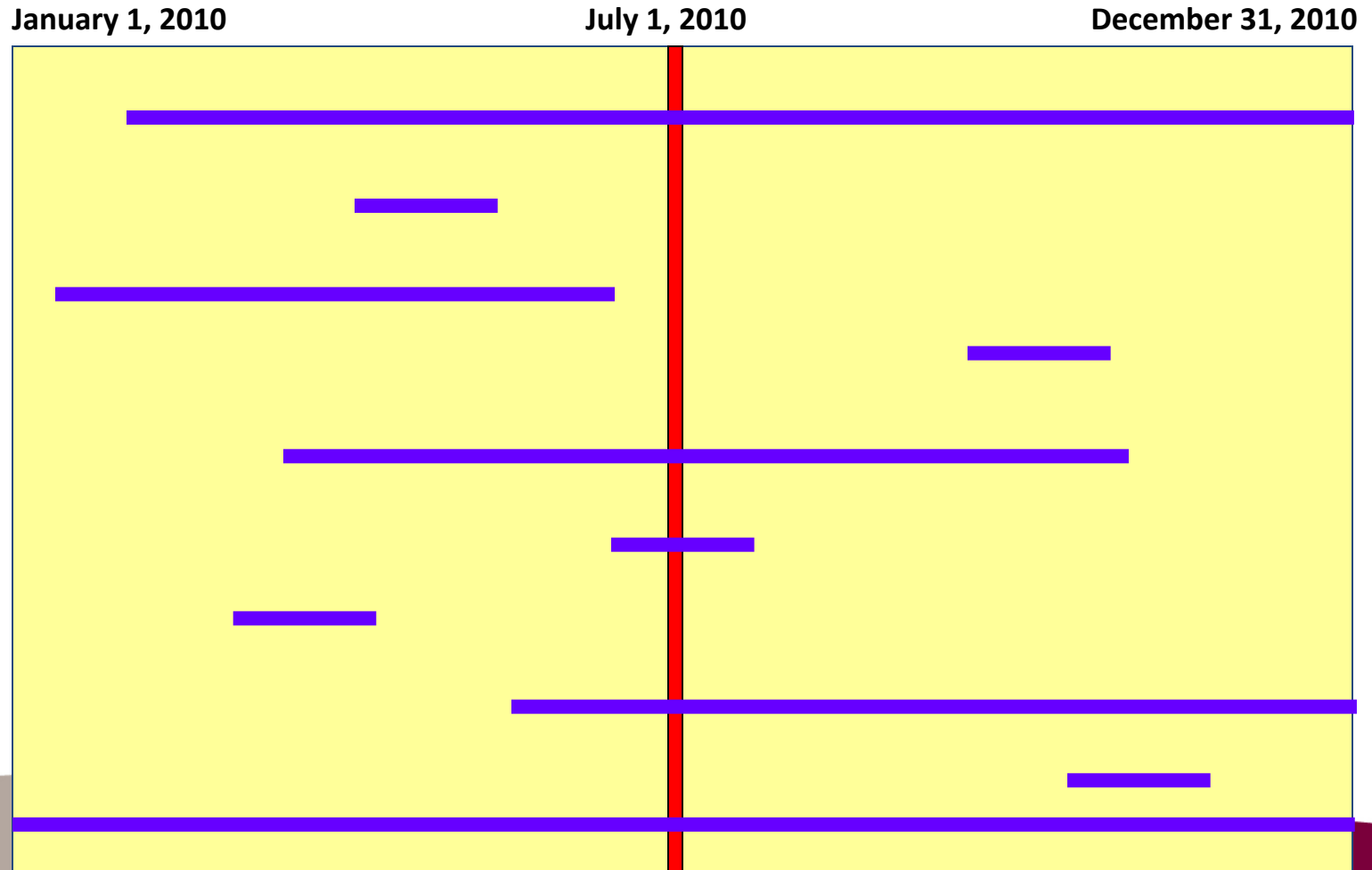
TIMELY PERMANENCY AND RE-ENTRIES



casey family programs

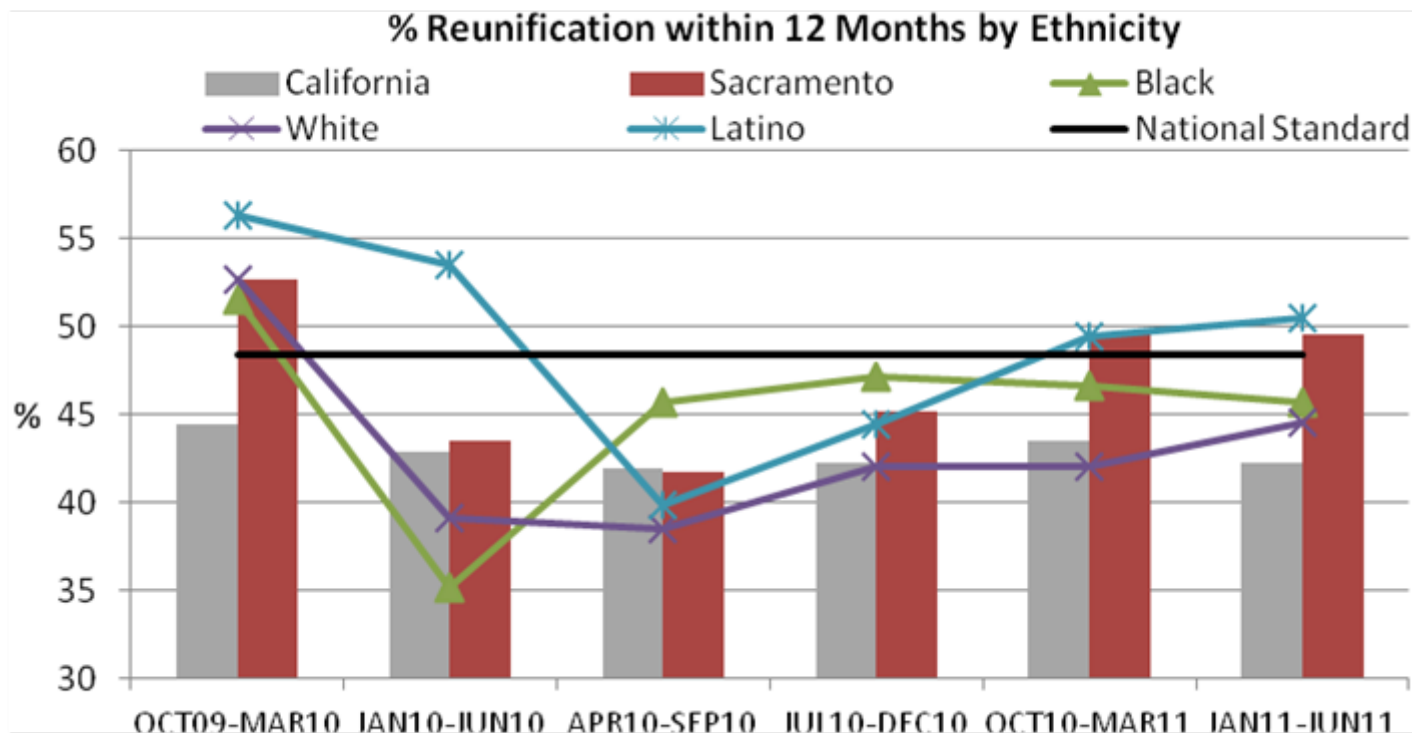
fostering families. fostering change.

the view matters...



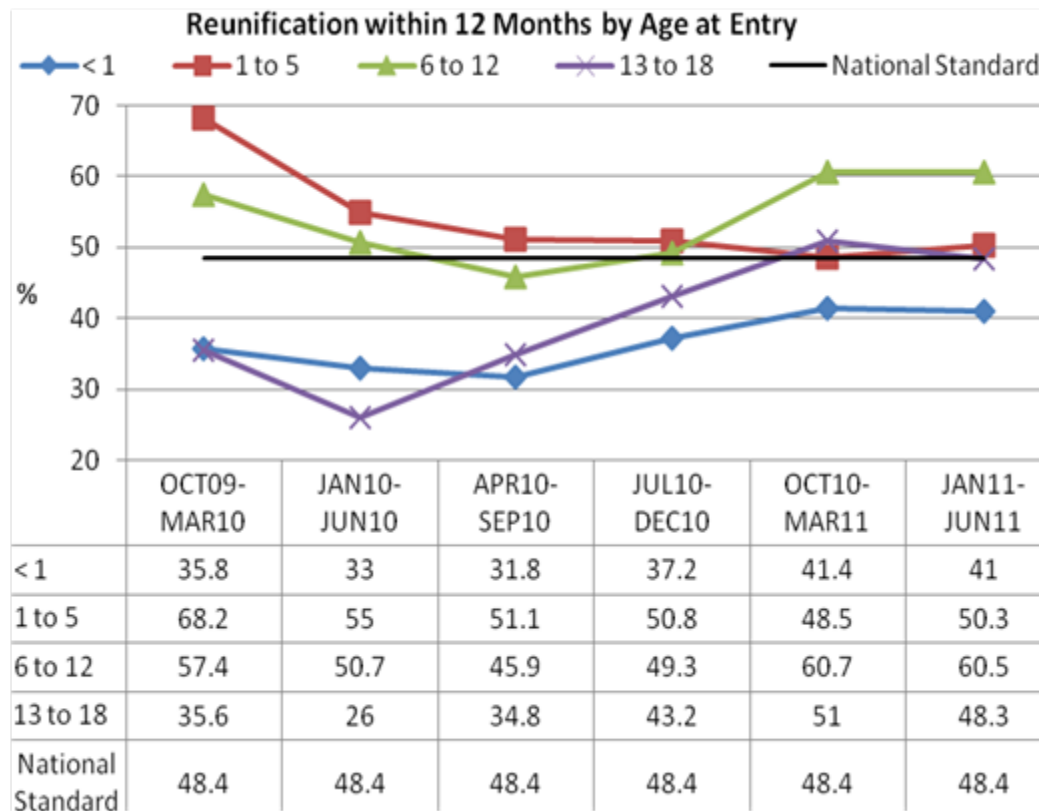
Source: Aron Shlonsky, University of Toronto (formerly at CSSR)

Timely Reunification: First Entry Cohort



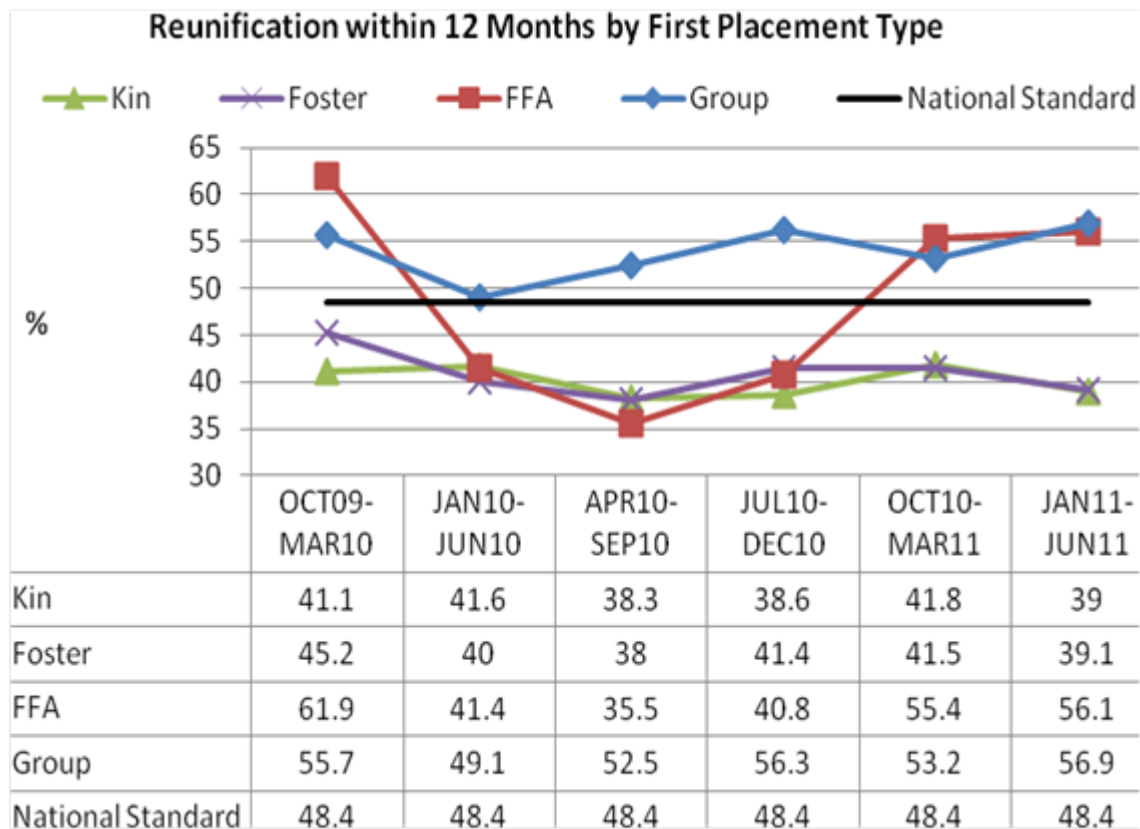
In Sacramento, 49% of all children who entered care for the first time between January 2011 and June, 2011 reunified within 12 months. Performance on this measure has been inconsistent. In the most recent reporting period, Sacramento exceeds the National standard and California performance. There are no clear differences by race/ethnicity.

Timely Reunification in Sacramento by Age at Entry



Infants are the least likely to reunify in 12 months, and children ages 6 to 12 are the most likely. There has been improvement for teens over the past few reporting periods.

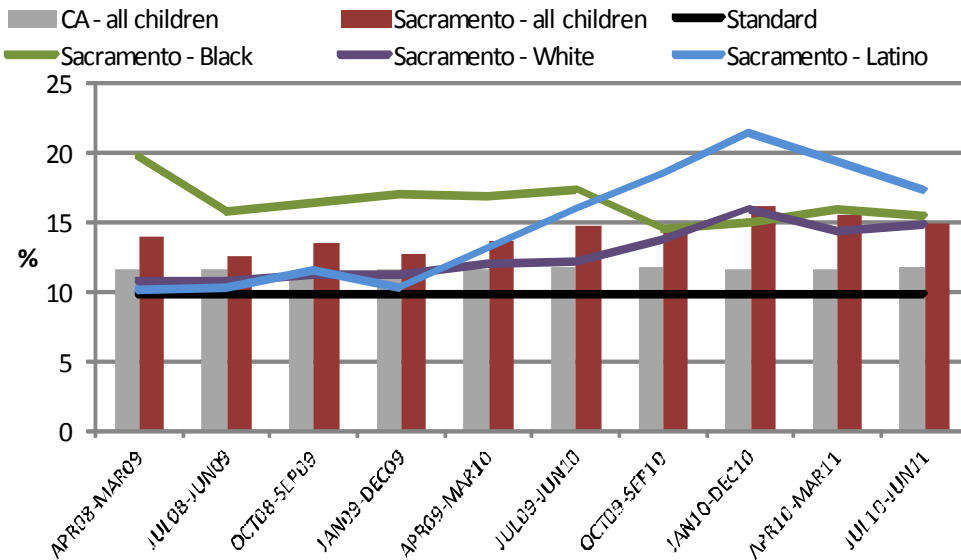
Timely Reunification in Sacramento by Placement Type



Children whose first placement type is a group home or shelter are slightly more likely to reunify within 12 months. However, children who remain in group care may be less likely to exit to other forms of permanency.

Re-Entry after Reunification

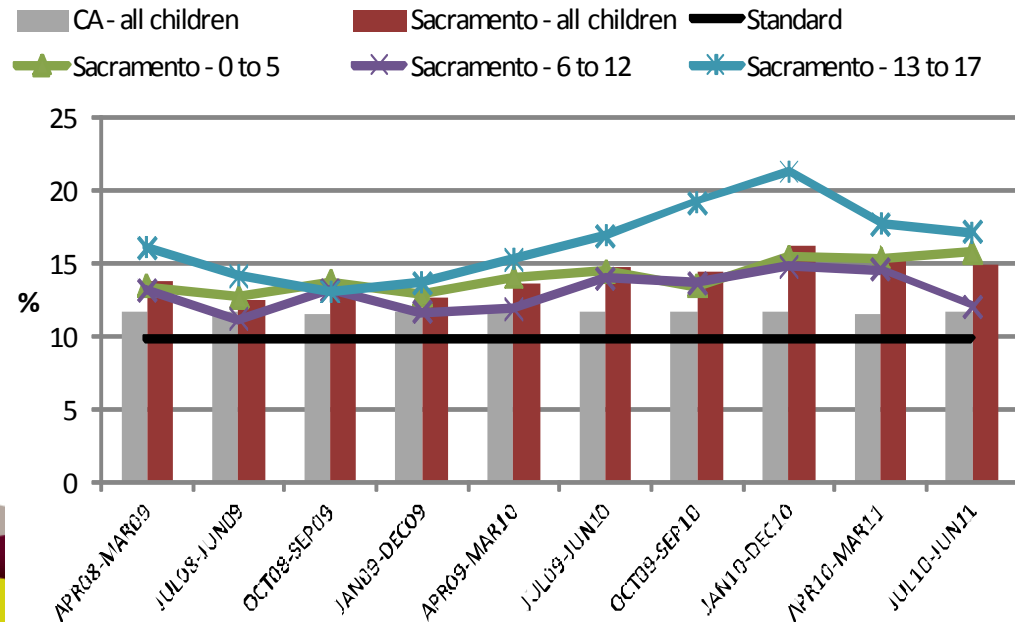
C1.4 Re-Entry By Ethnicity Following Reunification



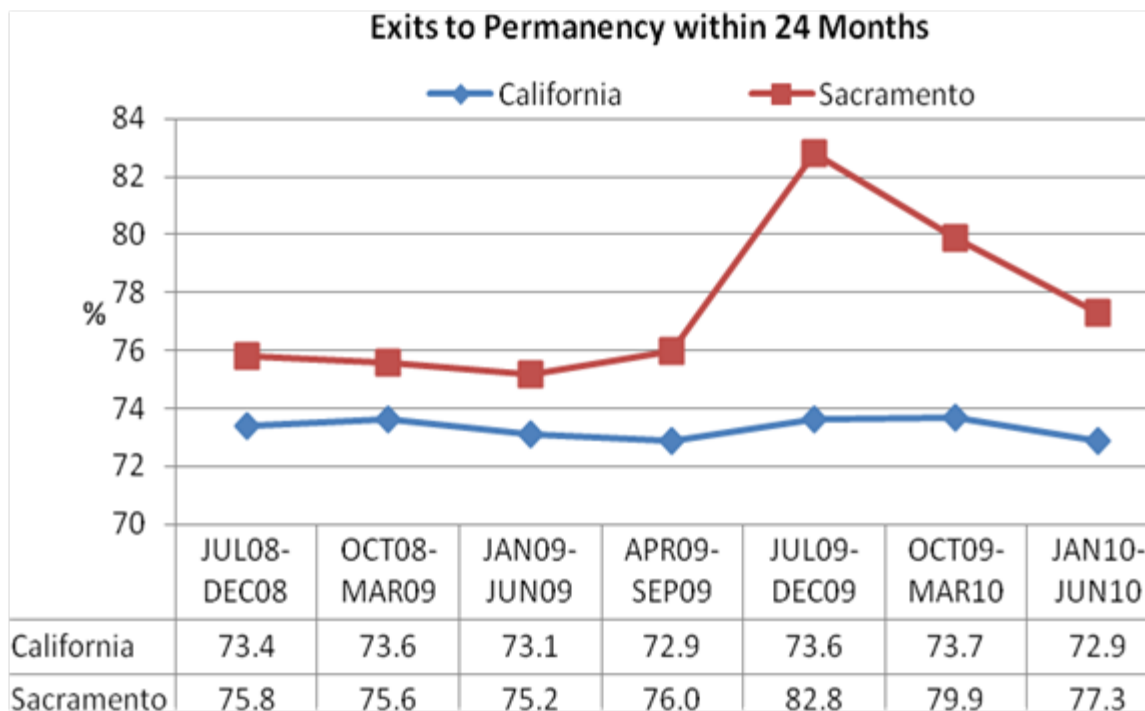
The data indicate that re-entries were becoming more common among Latino children, this seems to have improved.

Teens have been more likely to re-enter care, but this has improved in recent reporting periods.

Re-Entry By Age Following Reunification

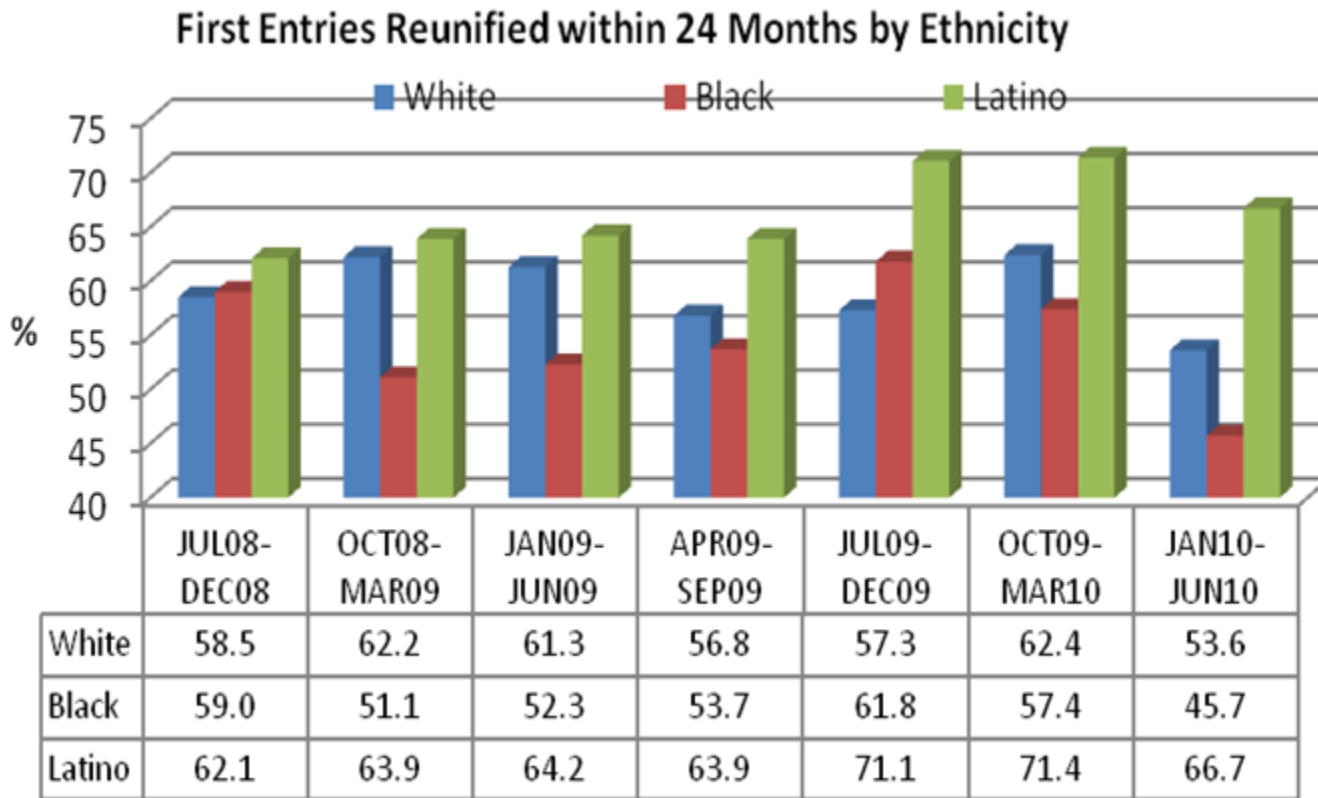


Permanency for new entries: Any permanent exit within 24 months



In the last period for which 24 months have passed, 77% of new entries in Sacramento achieved legal permanency within 24 months. This is slightly higher than the overall state performance

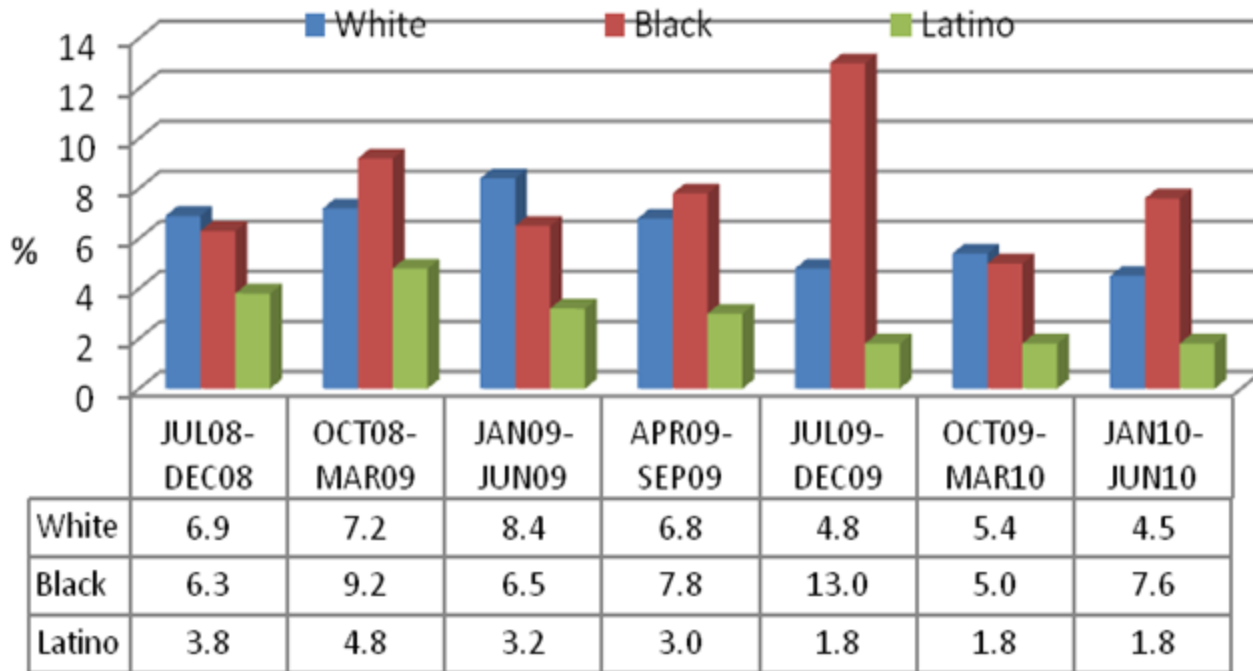
Permanency for new entries: Reunification in 24 months



While the overall proportion of exits to permanency within 24 months of entry does not vary substantially by race, there are differences in exit type. Latino children are more likely to be reunified

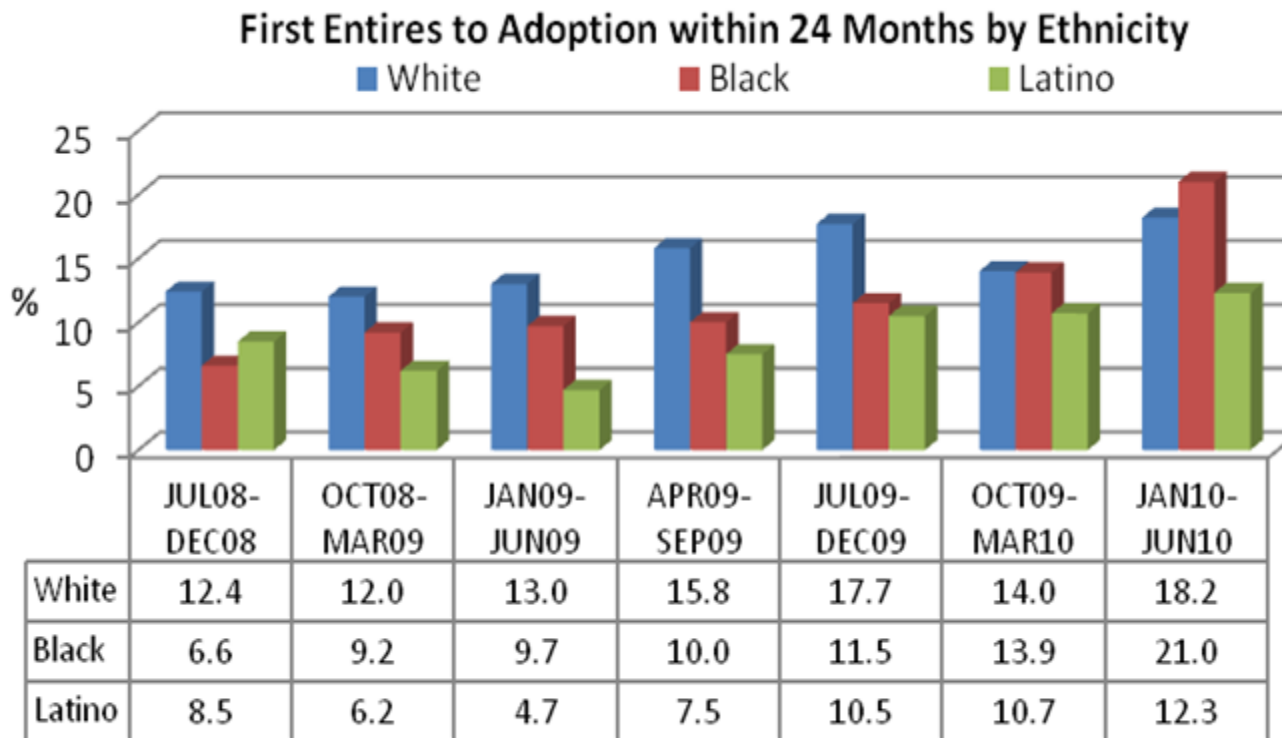
Permanency for new entries: Guardianship in 24 months

First Entries to Guardianship within 24 Months by Ethnicity



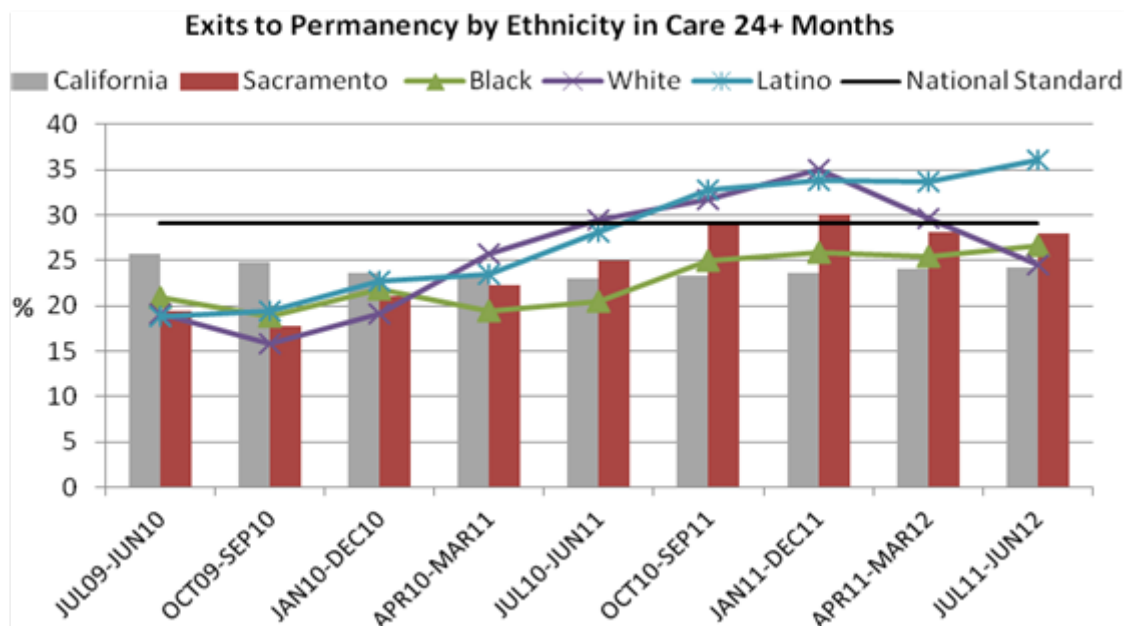
While the overall proportion of exits to permanency within 24 months of entry does not vary substantially by race, there are differences in exit type. African American children are somewhat more likely to exit to guardianship

Permanency for new entries: Adoption in 24 months



White children had been the most likely to exit to adoption within 24 months – African American children are now similar.

Permanency for children and youth already in care longer periods of time (at least 24 months)



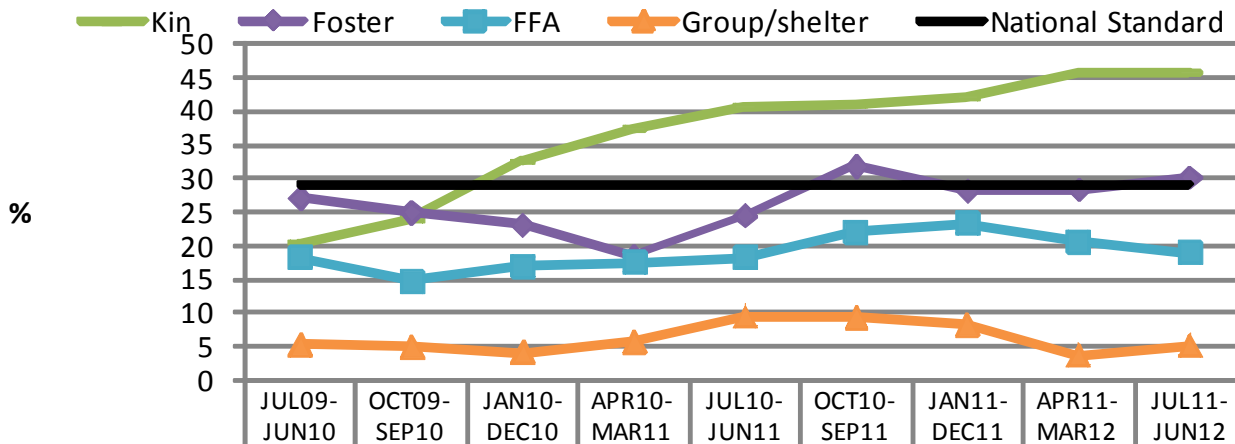
Sacramento continues to improve on this measure and now exceeds statewide performance. Latino children exceed the National Standard for exits to permanency.

Most recently performance has declined for White children.

This measure focuses on children who have been in care at least two years and follows them for an additional year to see if they exit to legal permanency prior to achieving age 18.

Permanency: Permanency for children and youth already in care at least 24 months

Exits to Permanency by Facility Type in Care 24+ Months



	JUL09-JUN10	OCT09-SEP10	JAN10-DEC10	APR10-MAR11	JUL10-JUN11	OCT10-SEP11	JAN11-DEC11	APR11-MAR12	JUL11-JUN12
Kin	20.5	23.9	32.5	37.5	40.8	40.9	42.0	45.6	45.8
Foster	27.1	25.0	23.1	18.4	24.4	31.8	28.2	28.3	30.2
FFA	18.2	14.7	16.9	17.5	18.2	22.1	23.3	20.6	18.9
Group/shelter	5.3	5.0	4.1	5.8	9.5	9.4	8.3	3.7	5.1
National Standard	29.1	29.1	29.1	29.1	29.1	29.1	29.1	29.1	29.1

The data indicate that performance has improved the most and is consistently better among children in kinship placements.

This measure focuses on children who have been in care at least two years and follows them for an additional year to see if they exit to legal permanency prior to achieving age 18.

Practice Discussion: Timely Permanency

- What practice/policy changes have had, or will have an impact on these indicators?
- What are some of the barriers?

children

Thank you!



casey family programs

fostering families. fostering change®