

**System Improvement Plan Priorities for Fiscal Year 2009-10 through 2011-12, May 2010 Update**  
**Update for August 2011**  
 SafeMeasures Data Extract 9/30/11  
 Reviewed at 11/7/11 DM Meeting

Accountability	Systemic Reorganization	Consolidation of Investigations	Completed	
		Establish Centralized Placement Services Unit		CPSU now does FR non-relative placement and plans to make all placements as of 1/1/12 (except for ER emergency relative placements and adoptive placements.)
		Reformat and consolidate existing policies and procedures		2 policy/procedure documents were posted in August: Facility Complaints and Child Visitation. 1 procedure was revised: how to obtain a DEC exam.
		Increase worker retention	Completed	
		Adopt vertical case management	Completed	
		Adopt a regional organization structure	Completed	
	Regular Use of Data	Embed data analysis in management decisions		The Data Plan draft was completed in March. April was spent coordinating the plan with Casey Foundation's work and in creating an implementation plan. Implementation pending a meeting with Casey.
	Performance Evaluation	Implement a performance evaluation system.	Completed	

**System Improvement Plan Priorities for Fiscal Year 2009-10 through 2011-12, May 2010 Update**  
**Update for August 2011**  
 SafeMeasures Data Extract 9/30/11  
 Reviewed at 11/7/11 DM Meeting

<b>Safety</b>	Timeliness	Safety Assessments	89.5 % complete 79.7% timely	<p><b>By policy, all safety assessments must be completed within two working days of the first contact. Please note that the completion date for safety compliance is the date the assessment is entered, not the assessment date indicated on the form.</b></p> <p><b>Timely</b></p> <p><b>Complete</b></p>											
	<p>12/31/10 Goal = <b>95%</b></p> <p>In July 91.4% of the required Safety Assessments were completed. Of those completed, 79.8% were timely. Timeliness been stable for 3 months after increasing for three. South lags behind the other two regions in both completion and timeliness. Sacramento has the 4<sup>th</sup> highest of the large counties in percentage of safety assessment completion behind Riverside at 93.2%, San Diego at 92.6% and Los Angeles at 91.6%</p> <p><b>Notice the downward trend for safety assessment completion</b> In August 79.7% were completed, down from 98.8% in January 2011. A spike in referrals and a high number of staff leaves contributed to this trend. Note: a contact has to be entered for the safety plan to show as completed. In August there were 104 children who did not have a required safety assessment completed North's August completion percentage was notably higher than the other two regions. Compared to other large counties, Sacramento ranks first in timely safety plan completion with Riverside next at 64.8% and San Diego at 51.8%</p> <table border="1" style="width:100%; border-collapse: collapse; margin-top: 10px;"> <thead> <tr> <th style="width:15%;">Region</th> <th style="width:20%;">% Safety Assessments Complete</th> <th style="width:15%;">% Safety Assessment Completed Timely</th> </tr> </thead> <tbody> <tr> <td>East</td> <td align="center">92.3%</td> <td align="center">84.2%</td> </tr> <tr> <td>North</td> <td align="center">92.3%</td> <td align="center">89.0%</td> </tr> <tr> <td>South</td> <td align="center">84.6%</td> <td align="center">68.2%</td> </tr> </tbody> </table>				Region	% Safety Assessments Complete	% Safety Assessment Completed Timely	East	92.3%	84.2%	North	92.3%	89.0%	South	84.6%
Region	% Safety Assessments Complete	% Safety Assessment Completed Timely													
East	92.3%	84.2%													
North	92.3%	89.0%													
South	84.6%	68.2%													

**System Improvement Plan Priorities for Fiscal Year 2009-10 through 2011-12, May 2010 Update**  
**Update for August 2011**  
 SafeMeasures Data Extract 9/30/11  
 Reviewed at 11/7/11 DM Meeting

Safety	Timeliness	Timely Response to Referrals – Immediate	August 93.1% Goal=95% East=95.2% North=93.8% South=92.2%		Legend: ■ Investigation Timely ◆ Investigation Not Timely
		Timely Response to Referrals – 10 Day	August=84.5% goal=91% East=85.2% North=87.8% South=81.3% A spike in referrals and a high number of staff leaves contributed to August's decrease.		Legend: ■ Investigation Timely ◆ Investigation Not Timely

System Improvement Plan Priorities for Fiscal Year 2009-10 through 2011-12, May 2010 Update

**Update for August 2011**

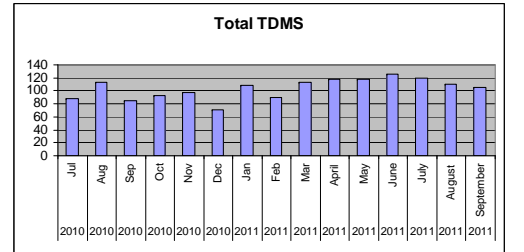
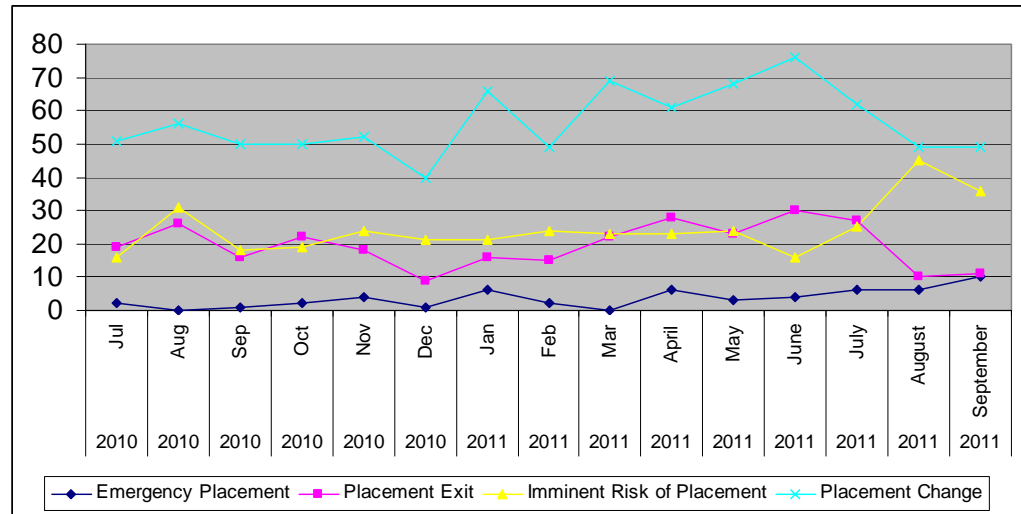
SafeMeasures Data Extract 9/30/11

Reviewed at 11/7/11 DM Meeting

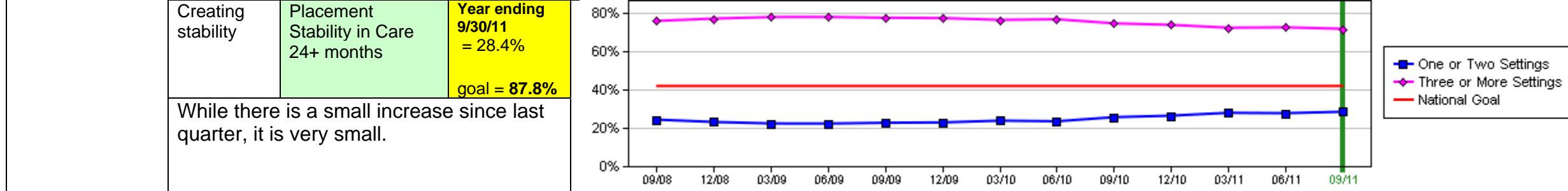
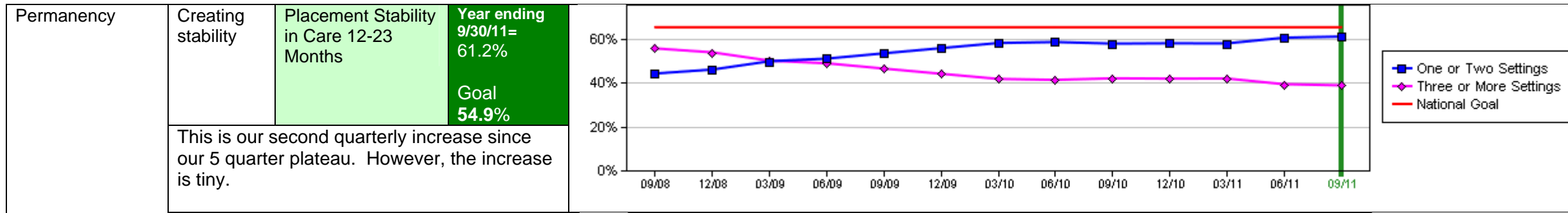
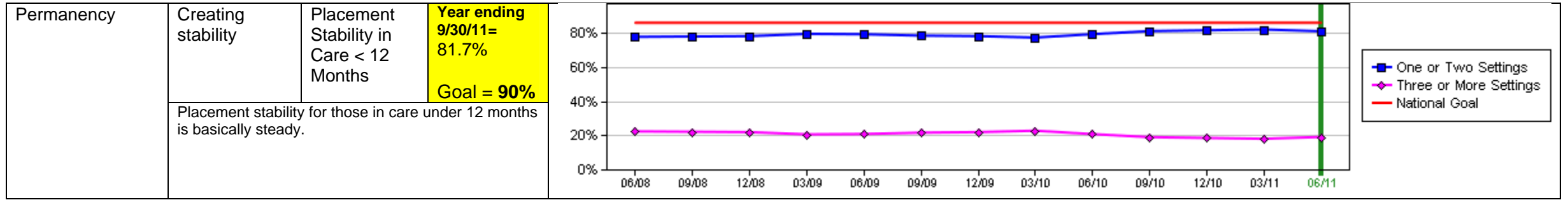
Safety		Timeliness	Timely Social Worker Contacts with Child.	August = 94.6%% goal =94%	<table border="1"> <caption>Line Graph Data</caption> <thead> <tr> <th>Month</th> <th>Contact Recorded (%)</th> <th>Overdue (%)</th> </tr> </thead> <tbody> <tr><td>Sep, 10</td><td>92</td><td>8</td></tr> <tr><td>Oct, 10</td><td>91</td><td>8</td></tr> <tr><td>Nov, 10</td><td>90</td><td>10</td></tr> <tr><td>Dec, 10</td><td>91</td><td>8</td></tr> <tr><td>Jan, 11</td><td>91</td><td>8</td></tr> <tr><td>Feb, 11</td><td>90</td><td>10</td></tr> <tr><td>Mar, 11</td><td>92</td><td>7</td></tr> <tr><td>Apr, 11</td><td>92</td><td>7</td></tr> <tr><td>May, 11</td><td>91</td><td>7</td></tr> <tr><td>Jun, 11</td><td>92</td><td>7</td></tr> <tr><td>Jul, 11</td><td>93</td><td>6</td></tr> <tr><td>Aug, 11</td><td>94.6</td><td>6</td></tr> <tr><td>Sep, 11</td><td>88</td><td>11</td></tr> </tbody> </table>	Month	Contact Recorded (%)	Overdue (%)	Sep, 10	92	8	Oct, 10	91	8	Nov, 10	90	10	Dec, 10	91	8	Jan, 11	91	8	Feb, 11	90	10	Mar, 11	92	7	Apr, 11	92	7	May, 11	91	7	Jun, 11	92	7	Jul, 11	93	6	Aug, 11	94.6	6	Sep, 11	88	11
Month	Contact Recorded (%)	Overdue (%)																																													
Sep, 10	92	8																																													
Oct, 10	91	8																																													
Nov, 10	90	10																																													
Dec, 10	91	8																																													
Jan, 11	91	8																																													
Feb, 11	90	10																																													
Mar, 11	92	7																																													
Apr, 11	92	7																																													
May, 11	91	7																																													
Jun, 11	92	7																																													
Jul, 11	93	6																																													
Aug, 11	94.6	6																																													
Sep, 11	88	11																																													
Central	93.8%	7% (241 out of 3457 contacts) were made by FFA workers. All FFAs are submitting one contact per month.																																													
East	95.2%																																														
No Region	95.1%																																														
North	95.3%																																														
South	92.9%																																														
All regions but South met the goal.																																															
Safety	Quality Oversight	Quality of assessments	On 8/11/11 a review of 48 May ER referrals was conducted. The sample was 10% of each disposition type.  No ER Evaluated Out review was conducted.																																												

**System Improvement Plan Priorities for Fiscal Year 2009-10 through 2011-12, May 2010 Update**  
**Update for August 2011**  
 SafeMeasures Data Extract 9/30/11  
 Reviewed at 11/7/11 DM Meeting

Permanency	Collaborative Decision Making	TDMs	
	<p>In August, there was a total of 110 TDMs:</p> <ul style="list-style-type: none"> <li>○ 45 Imminent Risk</li> <li>○ 6 Emergency Placement</li> <li>○ 49 Placement Change</li> <li>○ 10 Placement Exit</li> </ul> <p>Compared to July 2010, the number of imminent risk TDMs rose sharply, emergency TDMs remained the same, and the others fell sharply.</p> <p>The total number of TDMs has steadily fallen since June.</p> <p>At the July EMT meeting, goals for TDM meetings were set.</p> <p>I TDM facilitator was on leave in July and August.</p>		



**System Improvement Plan Priorities for Fiscal Year 2009-10 through 2011-12, May 2010 Update**  
**Update for August 2011**  
 SafeMeasures Data Extract 9/30/11  
 Reviewed at 11/7/11 DM Meeting



**System Improvement Plan Priorities for Fiscal Year 2009-10 through 2011-12, May 2010 Update**  
**Update for August 2011**  
 SafeMeasures Data Extract 9/30/11  
 Reviewed at 11/7/11 DM Meeting

The number of first episodes continues to climb

<p>Permanency</p>	<p>Creating stability</p>	<p>Previous Re-unification for Entry Cohort  <span style="color: green;">[new measure]</span></p>	<p><b>August = 9.2%</b> (pink line) (pink line)                   11 children reentered within 12 months of reunification</p>	
<p>Permanency</p>	<p>Creating stability</p>	<p>Increase the number of kin placements</p>	<p><b>Q4 2010 22.5%</b>   <b>Goal = 10%</b></p>	
<p>Permanency</p>	<p>Creating stability</p>	<p>Point in time kin placements</p>	<p><b>August = 28.9%</b></p>	

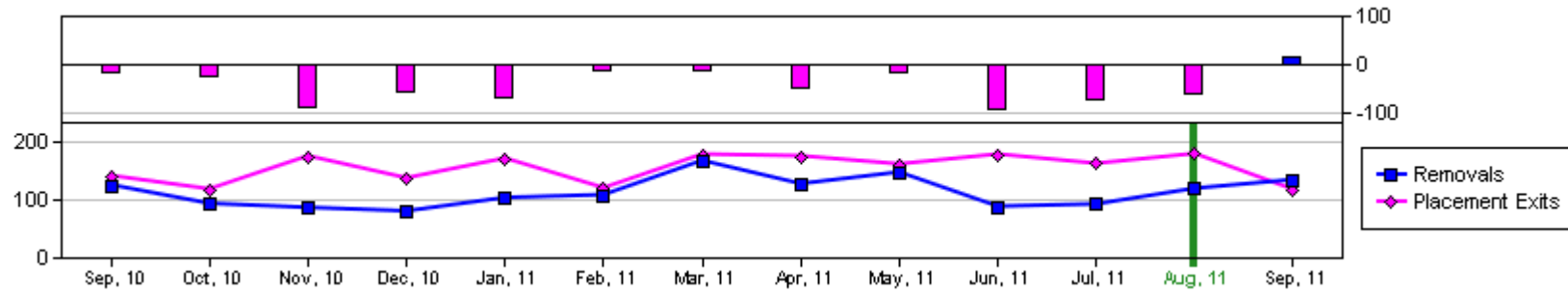
**System Improvement Plan Priorities for Fiscal Year 2009-10 through 2011-12, May 2010 Update**  
**Update for August 2011**  
 SafeMeasures Data Extract 9/30/11  
 Reviewed at 11/7/11 DM Meeting

Children Entering and Exiting Placement

The net size of the caseload decrease is getting smaller for June, July, and August.

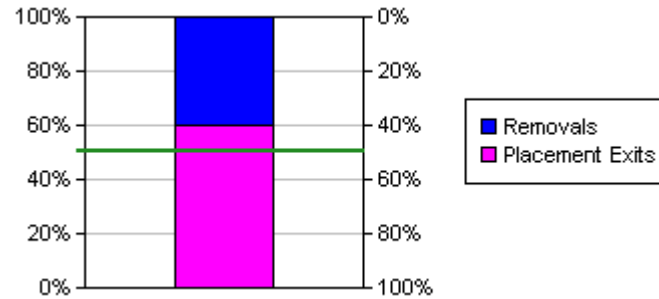
All regions but South had a caseload decrease.

August 2011= net decrease of 60 children in placement.



**Episode Open/Close**

Region	Removals	Exits	Net Change in Case Numbers
Central	0	21	-21
East	19	30	-11
No Region	47	58	-11
North	23	40	-17
South	30	30	0
<b>Total</b>	<b>119</b>	<b>179</b>	<b>-60</b>





System Improvement Plan Priorities for Fiscal Year 2009-10 through 2011-12, May 2010 Update

**Update for August 2011**

SafeMeasures Data Extract 9/30/11

Reviewed at 11/7/11 DM Meeting

Emergency  
Response  
Referrals

18 month  
averages:  
IR=298  
10 day=562

August 2011  
Referrals  
IR=393  
10 day=682

August was a  
very busy  
month.

