

System Improvement Plan Priorities for Fiscal Year 2009-10 through 2011-12, May 2010 Update
Update for April 2011
 SafeMeasures Data Extract 6/8/11

Accountability	Systemic Reorganization	Consolidation of Investigations	Completed	
		Establish Centralized Placement Services Unit		On April 18 th , CPSU will be available for all FR cases.
		Reformat and consolidate existing policies and procedures		Trained staff are now required to work 40 hours a month on this project. 10 of the 16 staff reported a total of 195 project hours for pay periods 8 and 9 (3/27/11-4/23/11). 4 p/p/p documents were posted in April (Case Record Access Trace, Intake, Notifying Clients of Their Civil Rights, and Social Worker Face to Face Contact with the Child) and 1 was updated (Administrative Reviews.) 36 procedures were posted in April; 33 of them were associated with Intake. 1 procedure was updated.
		Increase worker retention		
		Adopt vertical case management		Testing of TDM Reporting Tool expanded to include Central and South regions. Blended caseloads in North region achieve 75-25% ratio;
		Adopt a regional organization structure	Completed	Group Home Resource Fairs were held in each region. North region bureau meeting held at partner site (CRH). Subject: High Risk and AWOL youth. Speakers include: law enforcement, education, faith based, CRH.
	Regular Use of Data	Embed data analysis in management decisions		The Data Plan draft was completed in March. April was spent coordinating the plan with Casey Foundation's work and in creating an implementation plan.
	Performance Evaluation	Implement a performance evaluation system.	Completed	

System Improvement Plan Priorities for Fiscal Year 2009-10 through 2011-12, May 2010 Update
Update for April 2011
 SafeMeasures Data Extract 6/8/11

Timeliness	Timely Safety Assessments	
	April = 76.1%, but May is already 84.5% timely and likely to increase!	

12/31/10 Goal = **95%**

In April there were 65 children who did not have a required safety assessment completed

In April 88.6% of the required Safety Assessments were completed. Of those completed, 76.1% were timely.

Notice the downward trend. for safety assessment completion
 Note: a contact has to be entered for the safety plan to show as completed.

Region	% Safety Assessments Complete	% Safety Assessment Completed Timely
East	87.1	86.1
North	92.7	84.8
South	88.0	62.5

In March, North only completed 35% of it safety assessment, but in April, North zoomed to 92.7%. East improved by 12 points to 87.1%! South improved by 19.2 points to 88.0%. These levels will increase as more data is entered. In March, 84% were completed at the time of the report while that number is now 93.4%

For timely completion, North and South were about the same as in March while East improved by 5.6 points.

By policy, all safety assessments must be completed within two working days of the first contact. Please note that the completion date for safety compliance is the date the assessment is entered, not the assessment date indicated on the form

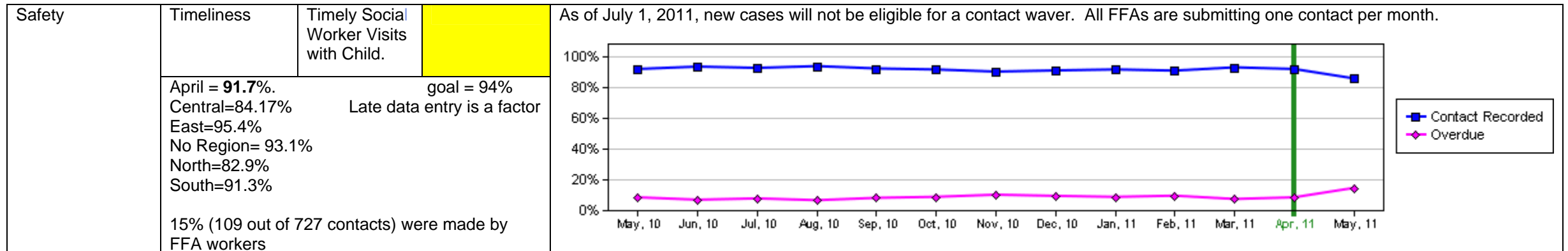
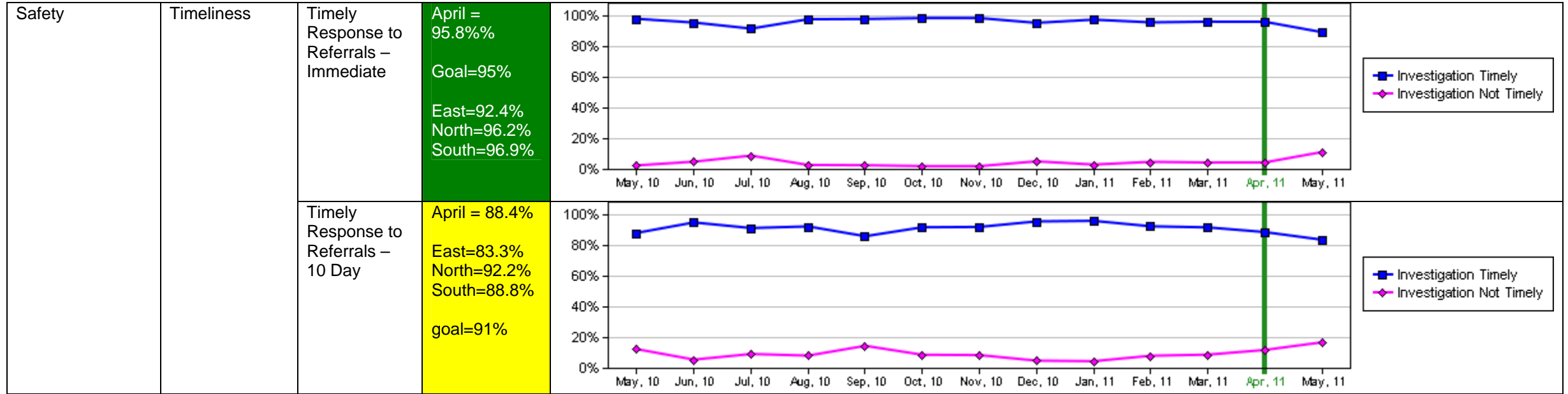
Timely Completion

Month	Completed on Time (%)	Completed Late (%)
May, 10	75	25
Jun, 10	80	18
Jul, 10	78	20
Aug, 10	76	22
Sep, 10	76	22
Oct, 10	76	21
Nov, 10	76	22
Dec, 10	77	20
Jan, 11	80	18
Feb, 11	78	20
Mar, 11	76	22
Apr, 11	75	24
May, 11	82	15

Complete

Month	Completed (%)	No Assessment (%)
May, 10	95	2
Jun, 10	95	2
Jul, 10	95	2
Aug, 10	95	2
Sep, 10	95	2
Oct, 10	95	2
Nov, 10	95	2
Dec, 10	95	2
Jan, 11	95	2
Feb, 11	95	2
Mar, 11	95	2
Apr, 11	88	10
May, 11	75	25

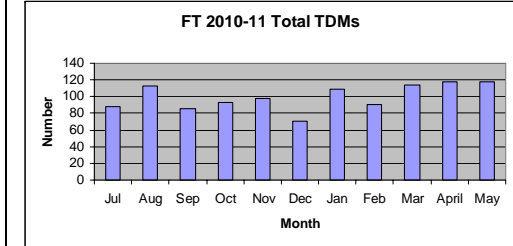
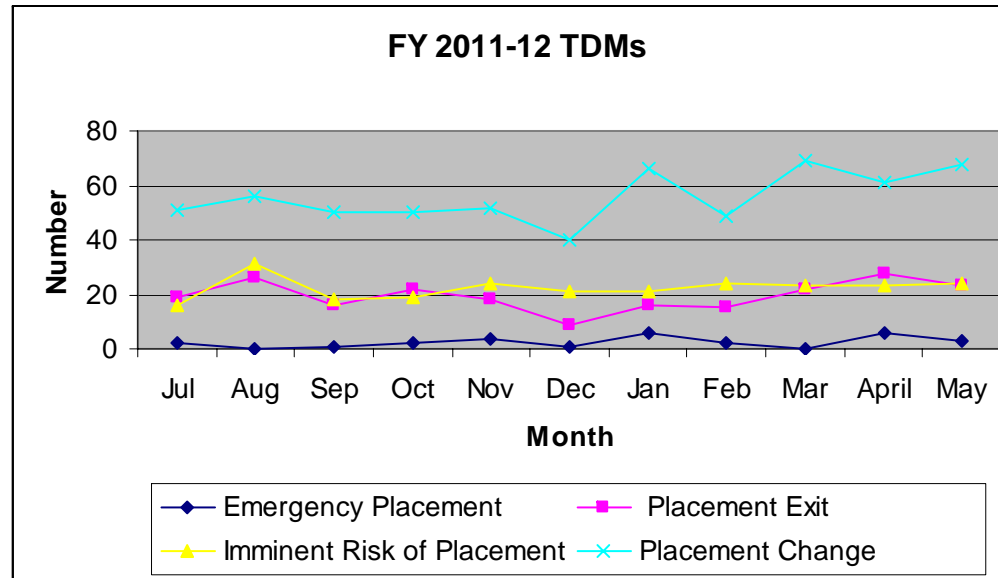
System Improvement Plan Priorities for Fiscal Year 2009-10 through 2011-12, May 2010 Update
Update for April 2011
 SafeMeasures Data Extract 6/8/11



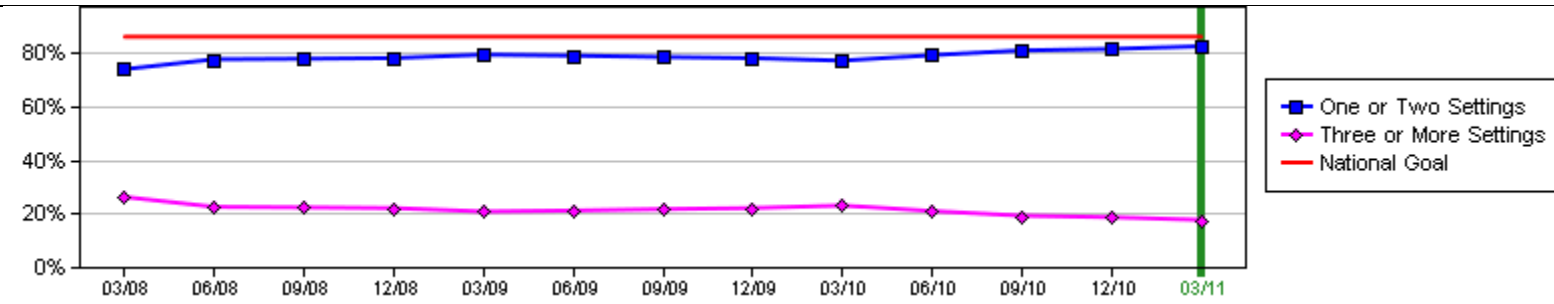
System Improvement Plan Priorities for Fiscal Year 2009-10 through 2011-12, May 2010 Update
Update for April 2011
 SafeMeasures Data Extract 6/8/11

Safety	Quality Oversight	Quality of assessments	No QA reviews were done as program specialist is assigned to a specialized case review.
--------	-------------------	------------------------	---

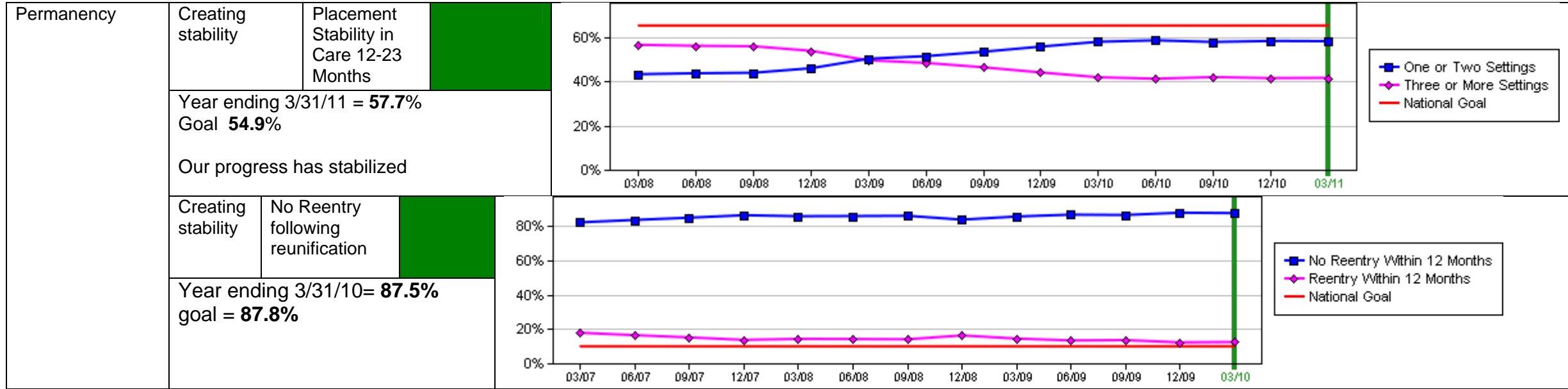
Permanency	Collaborative Decision Making	TDMs	
	Placement change TDMs has an increasing trend. In April, there was a total of 118 TDMs: <ul style="list-style-type: none"> ○ 23 Imminent Risk ○ 6 Emergency Placement ○ 61 Placement Change ○ 28 Placement Exit 		



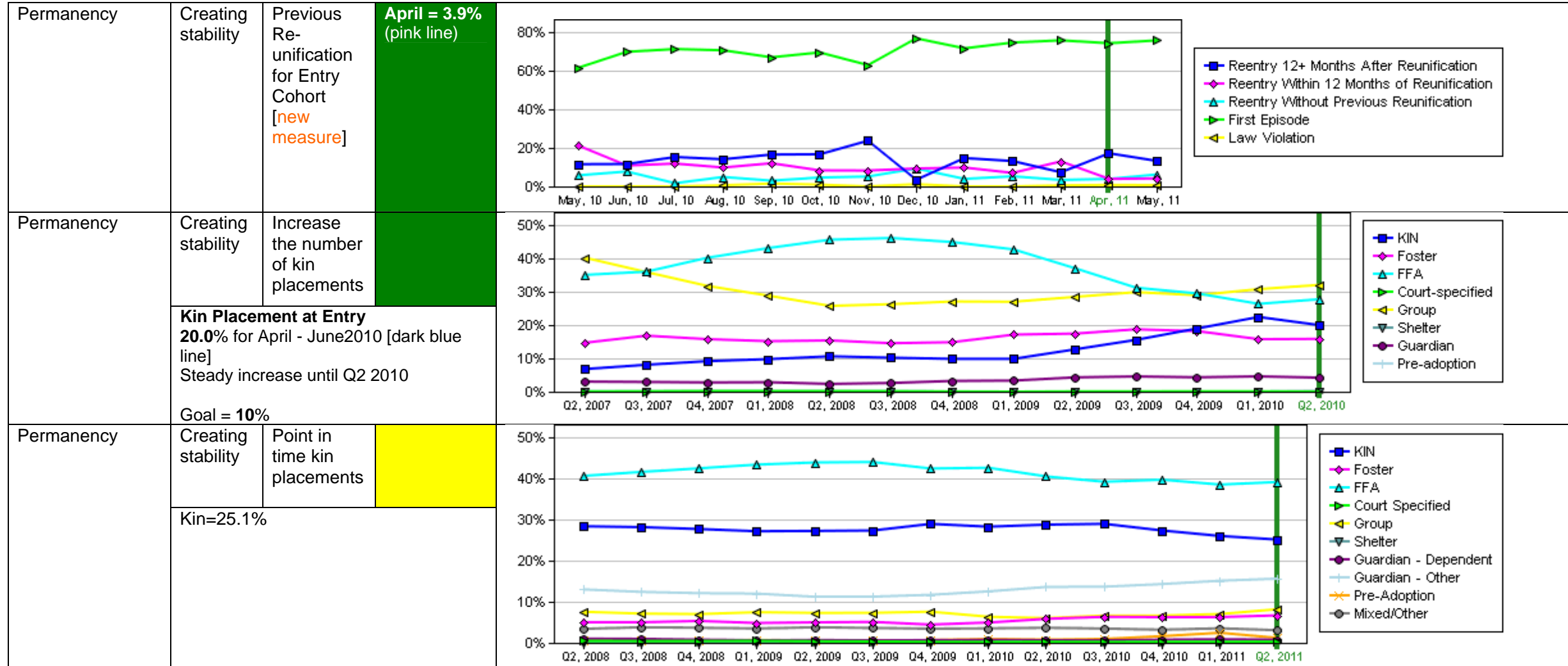
Permanency	Creating stability	Placement Stability in Care < 12 Months	
	Year ending 3/31/11 = 82.9% This is the fourth straight increase starting at 77.1 % in March 2010 Goal = 90%		



System Improvement Plan Priorities for Fiscal Year 2009-10 through 2011-12, May 2010 Update
Update for April 2011
 SafeMeasures Data Extract 6/8/11



System Improvement Plan Priorities for Fiscal Year 2009-10 through 2011-12, May 2010 Update
Update for April 2011
 SafeMeasures Data Extract 6/8/11



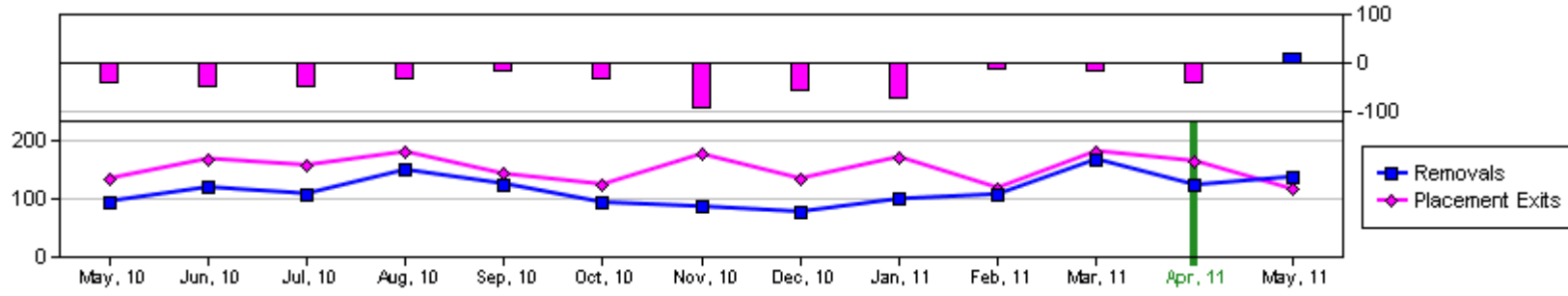
System Improvement Plan Priorities for Fiscal Year 2009-10 through 2011-12, May 2010 Update
Update for April 2011
 SafeMeasures Data Extract 6/8/11

Children Entering and Exiting Placement

April 2011

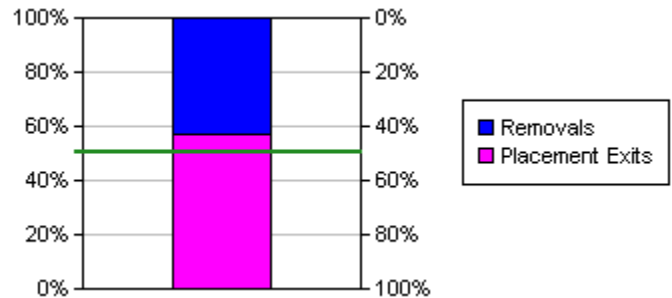
The trend of a decreasing caseload continued in April with 41 fewer children entering than exiting.

In May, however, that trend is broken.



Episode Open/Close

	Count	Percentage
Removals	123	42.9%
Placement Exits	164	57.1%



System Improvement Plan Priorities for Fiscal Year 2009-10 through 2011-12, May 2010 Update
Update for April 2011
 SafeMeasures Data Extract 6/8/11

Emergency
Response
Referrals

15 month
averages:
IR=293
10 day=557

April 2011
Referrals
IR=333
10 day=643

